

New Student Survey
Fall 2005

Contents

Executive Summary.....	1
Table 1 - Survey Response Rate.....	2
Table 2 - Most Important College Goals by Student Type.....	3
Figure 1 - New Student College Goals by Priority Grouping:.....	4
Table 3 - Admissions Selection Choice of UNCA	5
Table 4 - Number of Colleges Applied to Counting UNCA	5
Table 5 - Which Colleges, Other Than UNCA Did You Apply?	6
Table 6 - New Student Degree Intentions by Student Type	7
Table 7 - New Student Degree Intentions by Race.....	7
Table 8 - Admissions Scores of New Freshmen by Degree Intention	8
Figure 2 - New Freshmen Predicted GPA by Degree Intention.....	9
Table 9 - New Freshmen Retention Rates by Degree Intention, Cohort Year, & Follow-up Year	10
Table 10 - Freshman Graduation Rate by Degree Intention.....	10
Table 11 - Schools to Which New Students Intend to Transfer	11
Table 12 - Reasons for Enrolling at UNCA by Level of Importance	12
Table 13 - Reasons for Freshmen Enrolling at UNCA.....	13
Figure 3 - Retention Rate of Students Returning for the Second Year by Hours of Employment.....	14
Table 14 - Employment by Student Type.....	15
Table 15 - New Student Employment, First Year Cum GPA, and Retention to 2nd Year	16
Table 16 - Area in Which Students Lived During High School.....	17
Figure 4 - Highest Parental Level of Education for New Undergraduates	18
Table 17 - Parent's with a Baccalaureate Degree or Higher	19
Figure 5 - Family Income of New Fall Undergraduates	20
Table 18 - Family Income by Student Type	21
Table 19 - Level of Concern about Ability to Finance Education at UNCA.....	22
Table 20 - Computer Ownership	23
Table 21 - Internet Connectivity.....	23

Appendix: Survey Instrument

*Executive Summary
New Student Survey
Fall 2005*

In an effort to better understand the characteristics of our incoming students, the New Student Survey is administered to all new degree-seeking students each fall semester. These data help to describe the college goals, degree-intentions, socio-economic status, and employment activity of entering students. Freshman data from selected questions are used in a system-wide survey project that encompasses all the 16 campuses in the UNC system. Since 1994, we have collected usable survey responses from 89% of freshmen and 73% of transfer students.

Seventy-four percent of Fall 2005 freshmen indicated UNCA was their first college choice. Five percent indicated UNCA was less than their second choice. When asked to which schools other than UNCA they applied, freshmen most frequently named UNC Chapel Hill, Appalachian State, North Carolina State University, UNC Greensboro, UNC Charlotte or UNC Wilmington.

The following factors are consistently reported by students as important reasons for enrolling at UNCA: small school environment; academic reputation; location; social climate/activities; choice of major; liberal arts emphasis; and cost.

The most frequently cited college goals of new freshmen are as follows:

	2001	2002	2003	2004	2005
Prepare For Career or Good Job	81.6	82.5	83.8	83.7	81.6
Take Part in College Social Life	37.2	40.1	39.5	41.4	40.0
Acquire Broad Cultural/Literary Education	31.4	33.2	33.9	35.4	34.0
Dev Ability to Think Critically	27.9	28.4	33.0	26.9	32.6
Dev Ability to Write/Speak Effectively	25.8	20.2	23.6	28.2	27.9

The percentage of new freshmen indicating a clear intention to graduate from UNCA declined from 52% in 2004 to 48% in 2005. Eighty-two percent of 2005 new transfers enrolled with the intention of graduating from UNCA. Approximately 45% of freshmen are "undecided" about either earning a degree or plans to transfer and 6% intend to transfer and receive a degree elsewhere.

Fall 2005 freshmen reporting an intention to transfer from UNCA most often indicate a desire to enroll at NCSU (27%) or UNC Chapel Hill (27%). Historically, 62% of freshmen reporting an intention to graduate from UNCA receive a degree within five years. Among those intending to transfer, 31% change their plans and graduate from UNCA.

Forty-four percent of new 2005 freshmen had plans for a mean of 16 hours of employment per week. The rate of employment is greater for transfer students (73%) who plan to work a mean of 24 hours per week. Eleven percent of new freshmen and 50% of new transfer students planned to work 20 or more hours per week.

Among new freshmen, 72% have a least one parent with a four-year college degree. The median family income of new 2005 freshmen is \$60,001 - \$75,000.

Ninety-four percent of new freshmen reported that they have a computer for personal use. Of those, 84% said they have Internet access. Ninety-one percent of new transfers have a computer, 70% of whom have Internet access.

**Table 1
Survey Response Rate**

Fall Semester	Student Type						All Students		
	New Freshmen			New Transfers			Enrolled Students	Completed Survey	Response Rate
	Enrolled Students	Completed Survey	Response Rate	Enrolled Students	Completed Survey	Response Rate			
1994	398	388	97.5	358	295	82.4	756	683	90.3
1995	397	387	96.5	350	305	86.4	747	692	91.8
1996	456	412	89.9	253	191	74.9	709	603	84.6
1997	473	438	92.4	312	260	83.1	785	698	88.7
1998	480	408	85.0	326	229	70.2	806	637	79.0
1999	461	382	82.5	286	186	64.8	747	568	75.7
2000	501	433	86.1	302	175	57.8	803	608	75.4
2001	454	379	83.1	333	248	74.5	787	627	79.5
2002	428	381	88.8	382	297	77.7	810	678	83.6
2003	599	540	90.2	304	164	53.9	903	704	78.0
2004	707	619	87.6	227	161	70.9	934	780	83.5
2005	472	427	90.5	288	218	75.7	760	645	84.9
All Years	5,826	5,194	88.9	3,721	2,729	73.2	9,547	7,923	82.8

Table 2
Most Important College Goals by Student Type
(Data Expressed as Percentage of Students Selecting Up to Three Goals)

College Goal	New Freshmen					New Transfers				
	2001	2002	2003	2004	2005	2001	2002	2003	2004	2005
Prepare For Career or Good Job	81.6	82.5	83.8	83.7	81.6	85.8	89.5	82.5	87.5	88.0
Take Part in College Social Life	37.2	40.1	39.5	41.4	40.0	19.1	17.3	10.0	13.8	16.7
Acquire Broad Cultural/Literary Educ	31.4	33.2	33.9	35.4	34.0	33.3	34.6	41.3	37.5	33.3
Dev Ability to Think Critically	27.9	28.4	33.0	26.9	32.6	43.5	34.2	45.0	40.0	41.2
Dev Ability to Write/Speak Effectively	25.8	20.2	23.6	28.2	27.9	30.5	28.8	35.6	30.0	31.0
Dev Apprec, Enjoy of Art, Music, & Lit	23.1	27.6	21.4	29.0	27.2	23.6	23.7	20.6	25.0	25.5
Gain Experience in Relating to People	33.8	33.2	29.1	26.1	23.2	24.8	24.4	23.8	25.0	25.5
Dev Understand of Science and Tech	20.2	17.8	18.4	15.9	14.7	19.1	18.0	16.9	15.0	17.1
Wanted to Get Away From Home	10.4	10.3	10.1	8.9	9.5	3.7	4.1	5.6	2.5	3.7
Nothing Better to do	1.9	1.9	1.7	1.8	1.7	0.4	1.4	1.3	1.3	2.3

Figure 1

New Student College Goals by Priority Grouping Fall 2005 New Freshmen

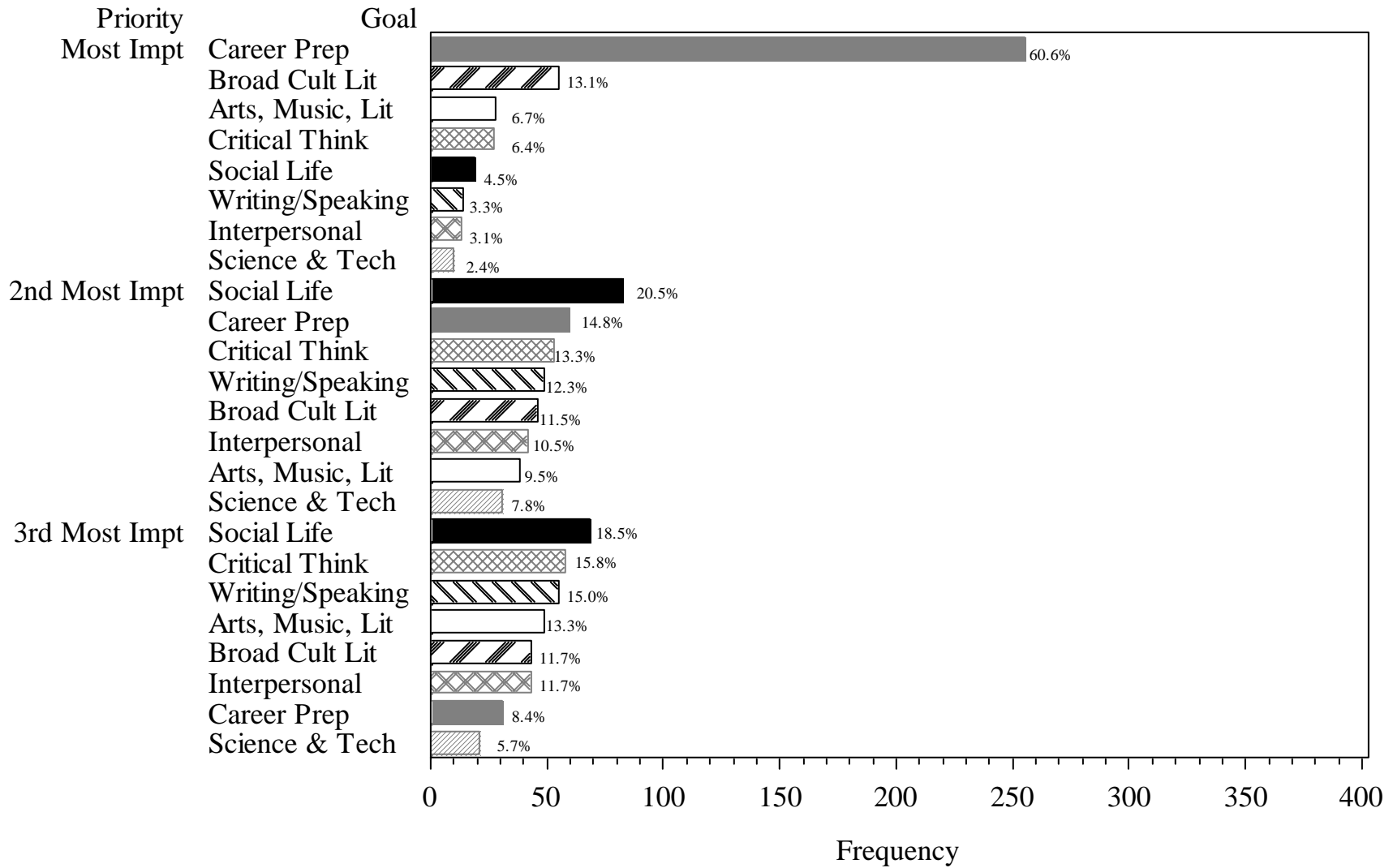


Table 3
Admissions Selection Choice of UNCA
(Percentages)

Is UNCA Your:	New Freshmen					New Transfers				
	2001	2002	2003	2004	2005	2001	2002	2003	2004	2005
First Choice	74.3	75.3	73.4	77.0	73.5	91.8	90.1	91.8	92.5	94.0
Second Choice	19.6	19.9	21.0	18.6	21.6	6.9	7.8	7.6	6.2	5.6
Less Than Second Choice	6.1	4.8	5.6	4.4	4.9	1.2	2.0	0.6	1.2	0.5
Total	100.0	100.0	100.0	100.0	100.0	100.0	100.0	100.0	100.0	100.0

Table 4
Number of Colleges Applied to Counting UNCA: New Freshmen

Region	Number of Colleges									
	2001		2002		2003		2004		2005	
	N	Mean	N	Mean	N	Mean	N	Mean	N	Mean
Eastern	22	4.0	26	2.2	27	3.1	27	2.5	28	2.8
Piedmont	150	2.7	137	2.9	210	2.9	273	3.2	178	2.8
Western	144	2.5	148	2.3	185	2.4	195	2.4	145	2.8
Out-of-State	63	3.5	70	3.8	118	4.1	124	3.8	76	4.2
Total	379	2.8	381	2.8	540	3.0	619	3.0	427	3.0

Table 5
To which colleges other than UNCA did you apply?
Fall 2005 Freshmen

School	N	PERCENT
University of North Carolina at Chapel Hill	89	11.2
Appalachian State University	85	10.7
North Carolina State University	49	6.2
University of North Carolina at Greensboro	42	5.3
University of North Carolina at Charlotte	38	4.8
University of North Carolina at Wilmington	34	4.3
Western Carolina University	32	4.0
East Carolina University	20	2.5
Elon College	19	2.4
Guilford College	14	1.8
Warren Wilson College	14	1.8
Davidson College	12	1.5
Mars Hill College	12	1.5
College of Charleston	10	1.3
Brevard College	6	0.8
Clemson University	6	0.8
Furman University	6	0.8
Gardner-Webb University	6	0.8
Goucher College	5	0.6
Meredith College	5	0.6
University of Georgia	5	0.6
University of Tennessee, Knoxville	5	0.6
University of the South	5	0.6
Asheville - Buncombe Technical Community Coll	4	0.5
Boston University	4	0.5
Foreign Institutions	4	0.5
North Carolina School of the Arts	4	0.5
University of Florida	4	0.5
University of North Carolina at Pembroke	4	0.5
Wake Forest University	4	0.5
Colorado College	3	0.4
Emory & Henry College	3	0.4
Flagler College	3	0.4
Indiana University at Bloomington	3	0.4
Oberlin College	3	0.4
Pennsylvania State University University Park	3	0.4
Stetson University	3	0.4
Tulane University	3	0.4
University of Miami	3	0.4
University of Virginia	3	0.4
Vanderbilt University	3	0.4
Winston-Salem State University	3	0.4
Winthrop University	3	0.4
Other (Schools With N <= 2 Combined)	206	26.0
Total	792	100.0

Table 6
New Student Degree Intentions by Student Type
(Percentages)

Degree Intentions	New Freshmen					New Transfers				
	2001	2002	2003	2004	2005	2001	2002	2003	2004	2005
Earn Degree at UNCA	39.1	45.1	47.2	52.3	47.5	82.3	80.8	78.7	89.4	81.7
Earn Degree But Transfer	11.1	7.1	7.2	6.0	6.3	3.6	3.7	2.4	3.7	3.2
Undecided About Earning Degree	15.8	19.9	20.2	16.8	18.7	3.2	2.7	4.9	3.7	3.7
Undecided About Transferring	31.1	26.5	24.4	23.4	26.0	9.3	10.4	11.0	1.9	8.7
Will Not Earn Degree	2.4	1.3	0.9	1.3	1.2	1.6	1.0	1.2	1.2	2.3
No Response	0.5	0.0	0.0	0.2	0.2	0.0	1.3	1.8	0.0	0.5
Total	100.0	100.0	100.0	100.0	100.0	100.0	100.0	100.0	100.0	100.0

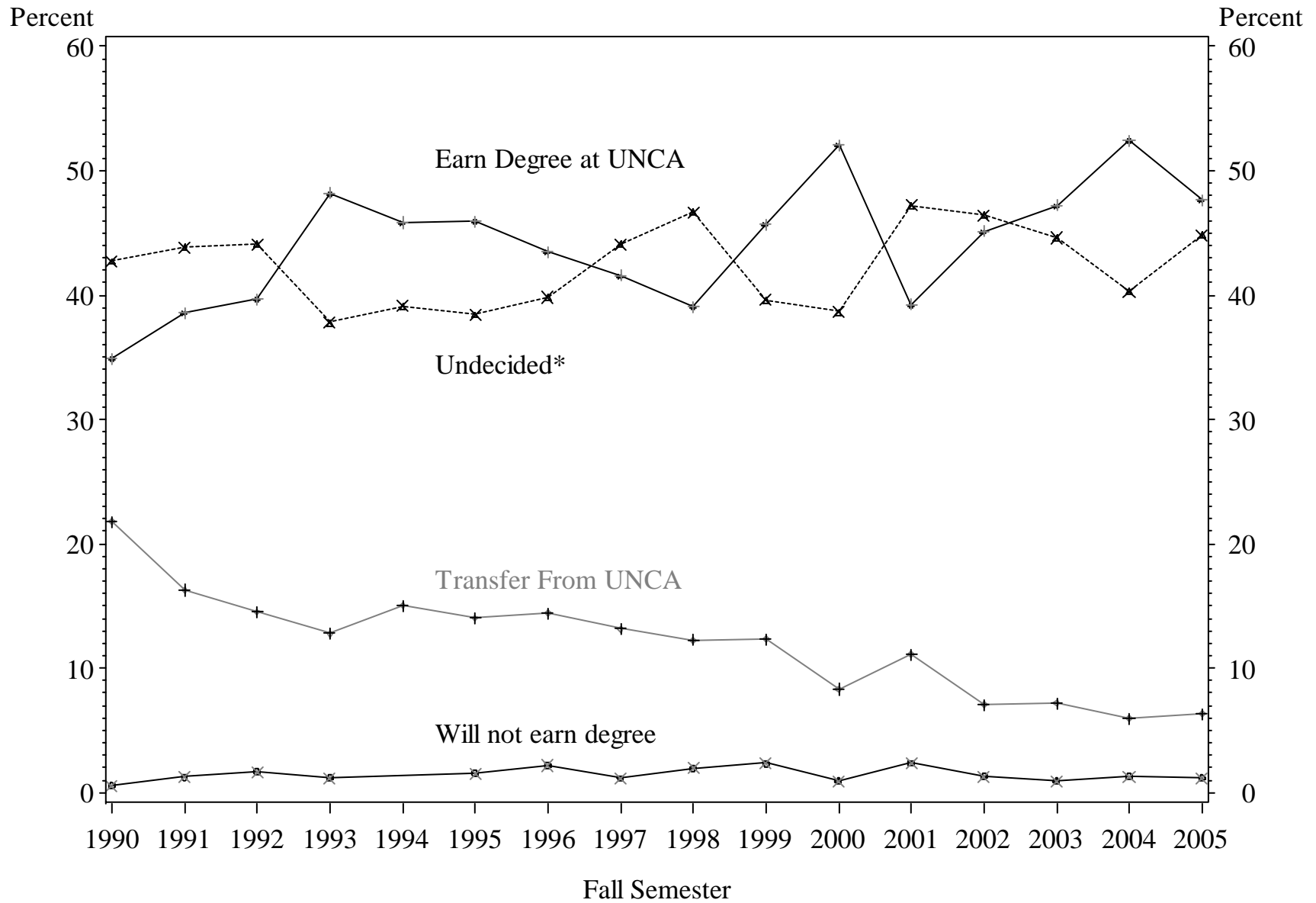
Table 7
New Student Degree Intentions by Race/Ethnicity
(Percentages)

Degree Intentions	Minority					White				
	2001	2002	2003	2004	2005	2001	2002	2003	2004	2005
Earn Degree at UNCA	55.1	52.9	60.0	56.5	55.7	56.5	61.5	53.9	60.5	59.1
Earn Degree But Transfer	10.2	7.8	6.2	9.7	4.9	7.9	5.5	6.2	5.0	5.2
Undecided About Earning Degree	8.2	9.8	9.2	14.5	8.2	11.2	12.6	17.5	14.0	14.4
Undecided About Transferring	22.4	23.5	21.5	19.4	26.2	22.2	18.9	21.3	19.0	19.7
Will Not Earn Degree	4.1	5.9	1.5	0.0	4.9	1.9	0.8	0.9	1.4	1.2
No Response	0.0	0.0	1.5	0.0	0.0	0.3	0.6	0.2	0.1	0.3
Total	100.0	100.0	100.0	100.0	100.0	100.0	100.0	100.0	100.0	100.0

Table 8
Admission Scores of New Freshmen by Degree Intention

Degree Intention	2001		2002		2003		2004		2005	
	SAT Mean	HS Rank Mean	SAT Mean	HS Rank Mean	SAT Mean	HS Rank Mean	SAT Mean	HS Rank Mean	SAT Mean	HS Rank Mean
Earn Degree at UNCA	1,176	82.6	1,170	79.7	1,174	79.1	1,188	77.8	1,190	80.9
Earn Degree But Transfer	1,138	77.9	1,161	78.3	1,143	76.2	1,118	76.7	1,180	80.0
Undecided About Earning Degree	1,153	77.9	1,153	75.9	1,161	74.7	1,145	71.9	1,168	80.7
Undecided About Transferring	1,164	80.1	1,174	76.9	1,166	73.3	1,177	77.3	1,195	77.5
Will Not Earn Degree	1,104	77.8	1,096	82.8	1,198	81.8	1,101	78.6	1,070	60.7
Cohort Total	1,162	80.4	1,166	78.2	1,167	76.6	1,173	76.6	1,185	79.7

Figure 2: New Freshmen Degree Intention by Year



*Undecided includes those undecided about earning a degree at UNCA or at all

Table 9
New Freshman Retention Rates by Degree Intention, Cohort Year, & Follow-up Year

Follow-up Year		Cohort Year									All Years
		1996	1997	1998	1999	2000	2001	2002	2003	2004	Pct Return
		Pct Return	Pct Return	Pct Return	Pct Return	Pct Return	Pct Return	Pct Return	Pct Return	Pct Return	Pct Return
1	Earn Degree at UNCA	83.7	79.4	82.4	83.9	86.2	81.8	80.2	85.1	84.3	83.3
	Earn Degree But Transfer	72.9	64.9	70.0	76.6	69.4	69.0	74.1	64.1	67.6	69.8
	Undecided About Earning Degree	81.7	73.3	72.7	72.7	84.7	76.7	73.7	79.8	71.2	76.2
	Undecided About Transferring	77.7	81.0	77.4	74.0	70.5	75.4	76.2	80.3	71.0	76.0
	Year Total	80.3	76.9	77.7	78.8	81.1	77.4	77.4	81.3	77.9	78.8
2	Earn Degree at UNCA	71.3	64.4	75.5	79.3	75.1	79.1	75.0	74.9	-	74.2
	Earn Degree But Transfer	40.7	49.1	48.0	51.1	47.2	50.0	48.1	46.2	-	47.3
	Undecided About Earning Degree	63.3	65.3	53.0	56.4	62.5	71.7	67.1	72.5	-	64.7
	Undecided About Transferring	60.2	58.6	60.5	58.3	56.8	63.6	69.3	63.6	-	61.5
	Year Total	62.8	61.0	63.7	66.9	66.6	69.6	69.9	69.5	-	66.3
3	Earn Degree at UNCA	66.3	56.7	67.3	71.3	69.3	73.6	72.1	-	-	68.0
	Earn Degree But Transfer	35.6	45.6	46.0	44.7	41.7	42.9	40.7	-	-	42.5
	Undecided About Earning Degree	56.7	62.7	54.5	52.7	65.3	70.0	57.9	-	-	60.1
	Undecided About Transferring	53.4	59.5	60.5	60.4	49.5	59.3	62.4	-	-	58.0
	Year Total	57.0	57.0	60.4	62.4	61.9	64.9	64.4	-	-	61.0

Table 10
Freshman Graduation Rate by Degree Intention: 1996-2000

Degree Intention	Freshmen Cohort					Total
	1996	1997	1998	1999	2000	
Earn Degree at UNCA	64.0	56.1	62.3	66.7	61.8	62.1
Earn Degree But Transfer	30.5	36.8	34.0	31.9	19.4	31.3
Undecided About Earning Degree	61.7	54.7	54.5	50.9	54.2	55.2
Undecided About Transferring	47.6	59.0	53.2	54.6	38.9	51.1
Cohort Total	54.5	54.1	54.6	56.8	51.9	54.3

Table 11
Schools to Which New Freshmen Intend to Transfer
Fall 2005

Will Transfer To:	N	Percent
North Carolina State University	7	26.9
University of North Carolina at Chapel Hill	7	26.9
Western Carolina University	4	15.4
Unknown Fice Code - Out-of-State	3	11.5
Appalachian State University	2	7.7
Unknown Fice Code - North	2	7.7
Foreign Institutions	1	3.8
Total	26	100.0

Table 12
Reasons for Enrolling at UNCA by Level of Importance
Fall 2005

Reasons for Selecting UNCA	New Freshmen			New Transfers		
	Not Important	Somewhat Important	Very Important	Not Important	Somewhat Important	Very Important
	Percent	Percent	Percent	Percent	Percent	Percent
UNCA's small school environment	6.1	25.6	68.2	14.9	34.7	50.5
Location of UNCA	8.7	27.8	63.5	3.3	24.8	71.9
UNCA has very good academic reputation	8.5	35.3	56.2	9.3	31.4	59.3
Liberal arts emphasis	21.2	31.7	47.0	21.9	39.8	38.3
UNCA has major I'm interested in	20.5	36.2	43.3	9.3	24.0	66.7
UNCA has low tuition and fees	21.4	41.8	36.8	18.3	40.1	41.6
Social climate/activities	16.9	50.1	33.0	37.9	39.0	23.1
Someone who had been before advised me	47.7	31.0	21.2	50.3	31.0	18.8
Advice of parents or relatives	28.0	51.3	20.7	49.3	35.5	15.3
I was offered financial assistance	59.0	20.2	20.7	53.6	24.0	22.4
UNCA's Undergrad Research Program	40.0	42.4	17.5	40.4	45.6	14.0
Advice of Teacher or Counselor	54.5	35.7	9.8	64.1	23.6	12.3

Table 13
Reasons for Freshmen Enrolling at UNCA
Percent Reporting Reason was "Somewhat Important" or "Very Important"

Reasons for Selecting UNCA	1995	1996	1997	1998	1999	2000	2001	2002	2003	2004	2005
UNCA's small school environment	93.5	92.1	93.3	90.6	90.0	92.9	89.8	89.9	90.9	93.7	93.9
UNCA has very good academic reputation	95.8	96.3	97.2	95.0	92.9	93.7	93.5	94.7	94.6	96.1	91.5
Location of UNCA	93.4	91.9	91.0	93.3	92.6	92.0	91.1	93.4	92.7	93.0	91.3
Social climate/activities	79.8	77.0	80.3	79.6	80.2	83.9	81.3	81.4	81.5	85.4	83.1
UNCA has major I'm interested in	80.6	83.0	82.5	82.4	86.6	86.6	81.7	82.5	83.3	85.5	79.5
Liberal arts emphasis	63.6	62.8	67.5	62.3	69.1	69.6	68.2	77.1	76.3	79.8	78.8
UNCA has low tuition and fees	85.3	82.8	83.8	80.8	83.9	81.3	80.9	81.1	80.7	79.5	78.6
Advice of parents or relatives	69.9	77.2	71.1	73.6	76.2	73.8	77.7	78.4	76.5	73.3	72.0
UNCA's Undergrad Research Program	63.2	60.1	58.2	60.0	61.0	61.0	60.6	62.2	63.5	63.2	60.0
Someone who had been before advised me	44.1	49.0	50.5	52.2	55.5	49.3	51.0	49.6	50.4	55.0	52.3
Advice of Teacher or Counselor	52.5	50.8	47.8	47.0	55.5	49.1	50.5	49.2	44.7	48.3	45.5
I was offered financial assistance	60.3	52.9	51.9	49.7	52.3	49.4	54.3	46.3	45.3	45.1	41.0

Figure 3: Retention Rate of Students for the Second Year
by Hours of Employment and Student Type

(2000-2004 Fall Cohorts Combined)



**Table 14
Employment by Student Type**

Cohort Year	New Freshmen					New Transfers				
	N	Number Employed	Percent	Mean Hours	% 20 Hrs or More	N	Number Employed	Percent	Mean Hours	% 20 Hrs or More
1995	365	171	46.8	16.2	15.3	294	225	76.5	24.8	51.7
1996	400	160	40.0	15.8	11.5	187	130	69.5	24.2	52.9
1997	421	181	43.0	14.7	11.2	256	188	73.4	25.2	52.0
1998	403	172	42.7	15.8	13.9	226	158	69.9	22.7	44.2
1999	376	164	43.6	15.4	13.3	183	126	68.9	23.8	46.4
2000	424	178	42.0	15.9	11.6	175	114	65.1	24.1	44.0
2001	373	160	42.9	16.0	15.0	248	187	75.4	23.7	50.0
2002	374	151	40.4	17.0	13.4	297	216	72.7	23.0	48.5
2003	534	214	40.1	15.2	8.6	162	116	71.6	21.5	42.6
2004	603	218	36.2	17.2	10.6	160	115	71.9	23.1	48.8
2005	420	185	44.0	15.6	10.5	215	156	72.6	23.8	49.8
All Years	4,693	1954	41.6	15.9	12.0	2,403	1731	72.0	23.7	48.6

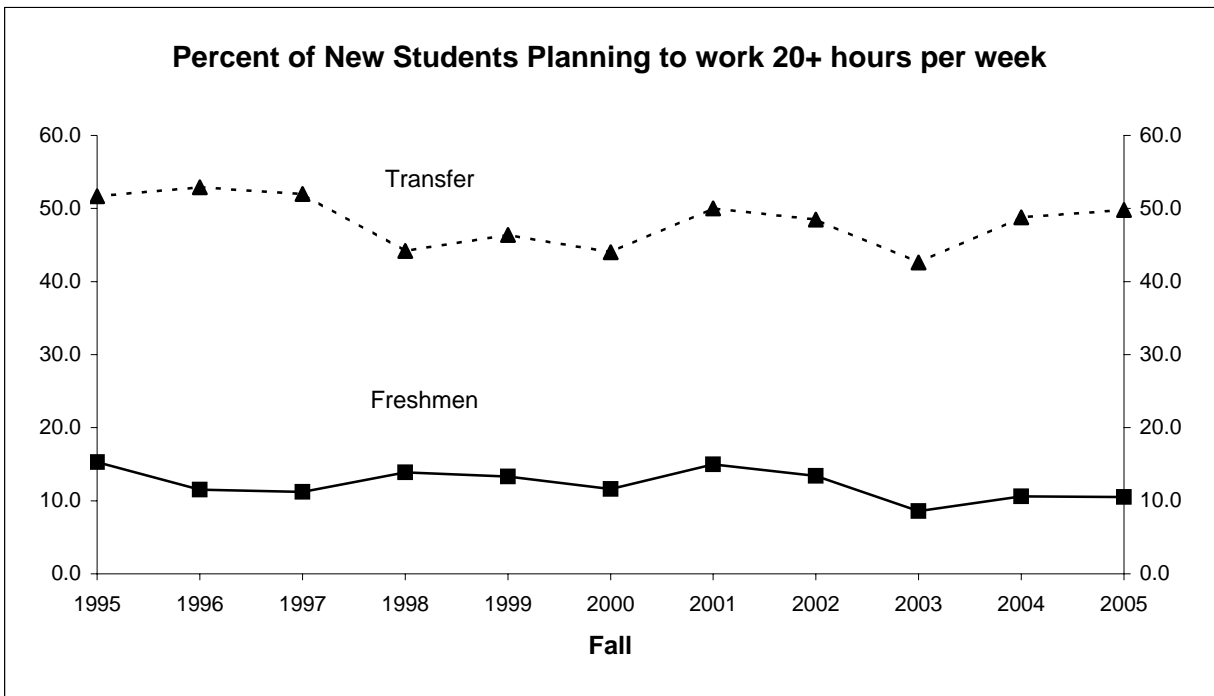


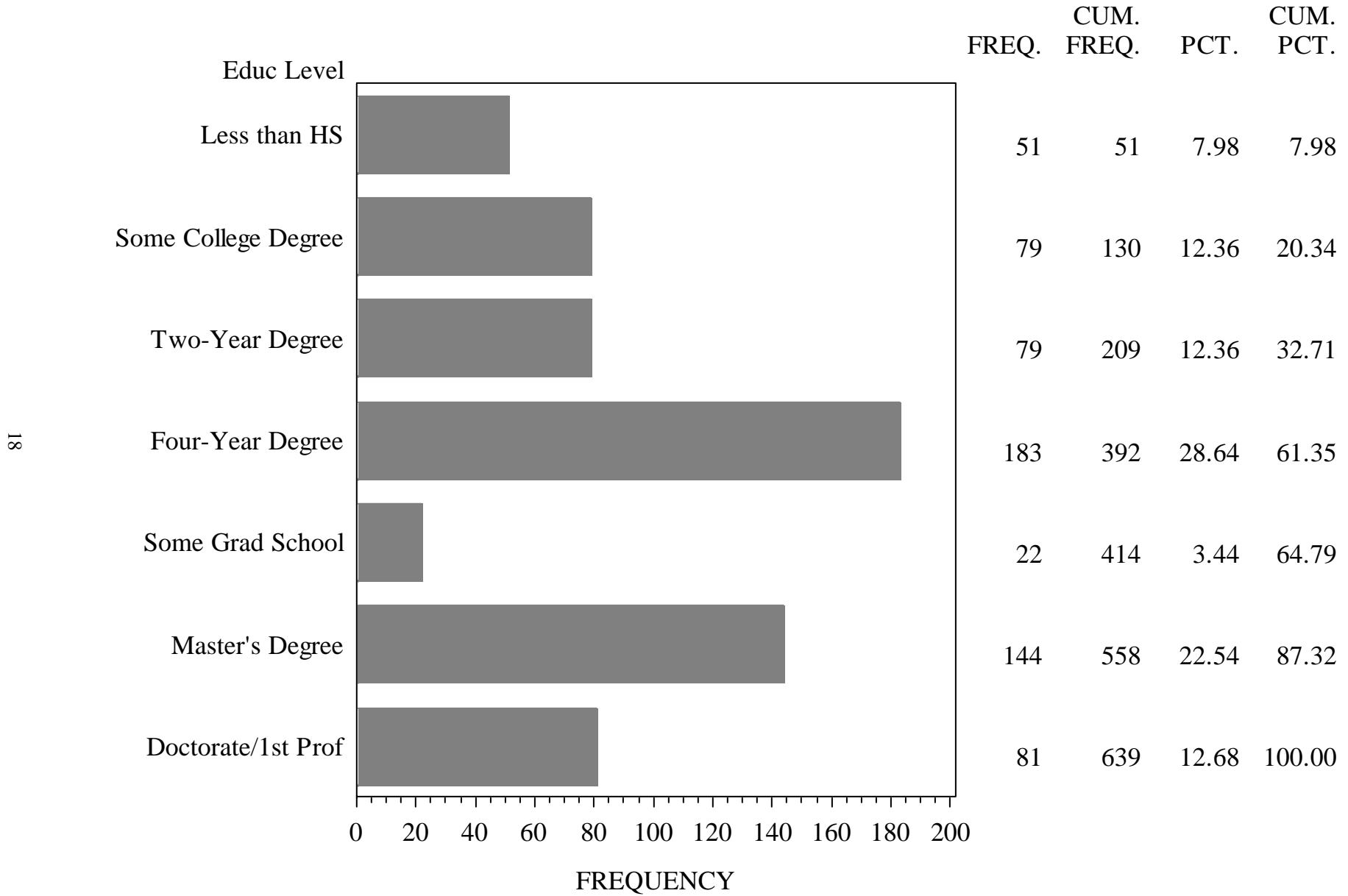
Table 15
New Student Employment, First Year Cum GPA, and Retention to 2nd Year
(New Fall Students)

Employment Status		Fall Cohort											
		2001			2002			2003			2004		
		N	Percent Enrolled	Cum GPA	N	Percent Enrolled	Cum GPA	N	Percent Enrolled	Cum GPA	N	Percent Enrolled	Cum GPA
Not Working	New Freshmen	213	80.8	3.0	223	83.4	3.0	320	82.5	2.8	385	80.5	2.9
	New Transfers	61	83.6	3.0	81	64.2	2.7	46	78.3	3.0	45	75.6	3.0
	Status Total	274	81.4	3.0	304	78.3	2.9	366	82.0	2.8	430	80.0	2.9
1 - 9 Hours	New Freshmen	16	87.5	2.7	20	65.0	2.9	20	90.0	2.9	15	66.7	2.7
	New Transfers	4	100.0	3.2	4	100.0	2.9	8	87.5	3.4	2	100.0	3.3
	Status Total	20	90.0	2.8	24	70.8	2.9	28	89.3	3.0	17	70.6	2.7
10 - 19 Hours	New Freshmen	75	72.0	2.7	56	76.8	2.5	110	81.8	2.8	98	77.6	2.9
	New Transfers	53	79.2	3.1	60	71.7	2.8	38	81.6	3.1	31	64.5	2.9
	Status Total	128	75.0	2.9	116	74.1	2.7	148	81.8	2.9	129	74.4	2.9
20 or more Hours	New Freshmen	56	75.0	2.6	50	72.0	2.3	46	73.9	2.7	64	70.3	2.7
	New Transfers	124	68.5	2.8	142	76.1	2.8	69	71.0	2.8	77	80.5	3.2
	Status Total	180	70.6	2.7	192	75.0	2.6	115	72.2	2.8	141	75.9	3.0
Cohort Total		602	77.1	2.9	636	76.3	2.8	657	80.5	2.8	717	78.0	2.9

Table 16
Area in Which Students Lived During High School
(Freshmen & Transfers Combined)

Size of Area	2000		2001		2002		2003		2004		2005	
	N	Pct	N	Pct	N	Pct	N	Pct	N	Pct	N	Pct
Rural Area	97	16.2	103	16.7	108	16.0	110	15.8	89	11.5	110	17.2
Small Town (less than 20,000)	167	27.8	174	28.2	197	29.2	179	25.7	225	29.0	191	29.8
Moderate Size City (20,001-60,000)	174	29.0	200	32.4	212	31.5	249	35.7	258	33.2	173	27.0
Large city (60,001-100,000)	76	12.7	70	11.3	75	11.1	87	12.5	100	12.9	85	13.3
Urban Area (more than 100,000)	86	14.3	71	11.5	82	12.2	72	10.3	104	13.4	81	12.7
Total	600	100.0	618	100.0	674	100.0	697	100.0	776	100.0	640	100.0

Figure 4: Highest Parental Level of Education for New 2005 Undergraduates



New Student Survey
Table 17
Parents With a Baccalaureate Degree or Higher

Student Type	N	Mother		Father		Either Parent		
		Have Degree	Percent	Have Degree	Percent	Have Degree	Percent	
New	1996	409	172	42.1	192	46.9	239	58.4
Freshmen	1997	436	210	48.2	232	53.2	278	63.8
	1998	405	198	48.9	208	51.4	265	65.4
	1999	381	190	49.9	198	52.0	247	64.8
	2000	429	215	50.1	245	57.1	288	67.1
	2001	374	188	50.3	216	57.8	256	68.4
	2002	378	192	50.8	224	59.3	265	70.1
	2003	538	307	57.1	324	60.2	384	71.4
	2004	617	375	60.8	384	62.2	454	73.6
	2005	424	249	58.7	239	56.4	305	71.9
New	1996	189	72	38.1	94	49.7	109	57.7
Transfers	1997	256	94	36.7	117	45.7	137	53.5
	1998	229	80	34.9	95	41.5	115	50.2
	1999	185	77	41.6	90	48.6	110	59.5
	2000	173	77	44.5	83	48.0	101	58.4
	2001	246	84	34.1	115	46.7	130	52.8
	2002	295	116	39.3	140	47.5	169	57.3
	2003	163	71	43.6	75	46.0	92	56.4
	2004	160	64	40.0	73	45.6	88	55.0
	2005	215	92	42.8	102	47.4	125	58.1
Cohort Totals								
	1996	598	244	40.8	286	47.8	348	58.2
	1997	692	304	43.9	349	50.4	415	60.0
	1998	634	278	43.8	303	47.8	380	59.9
	1999	566	267	47.2	288	50.9	357	63.1
	2000	602	292	48.5	328	54.5	389	64.6
	2001	620	272	43.9	331	53.4	386	62.3
	2002	673	308	45.8	364	54.1	434	64.5
	2003	701	378	53.9	399	56.9	476	67.9
	2004	777	439	56.5	457	58.8	542	69.8
	2005	639	341	53.4	341	53.4	430	67.3

Figure 5: Family Income of New Fall 2005 Undergraduates

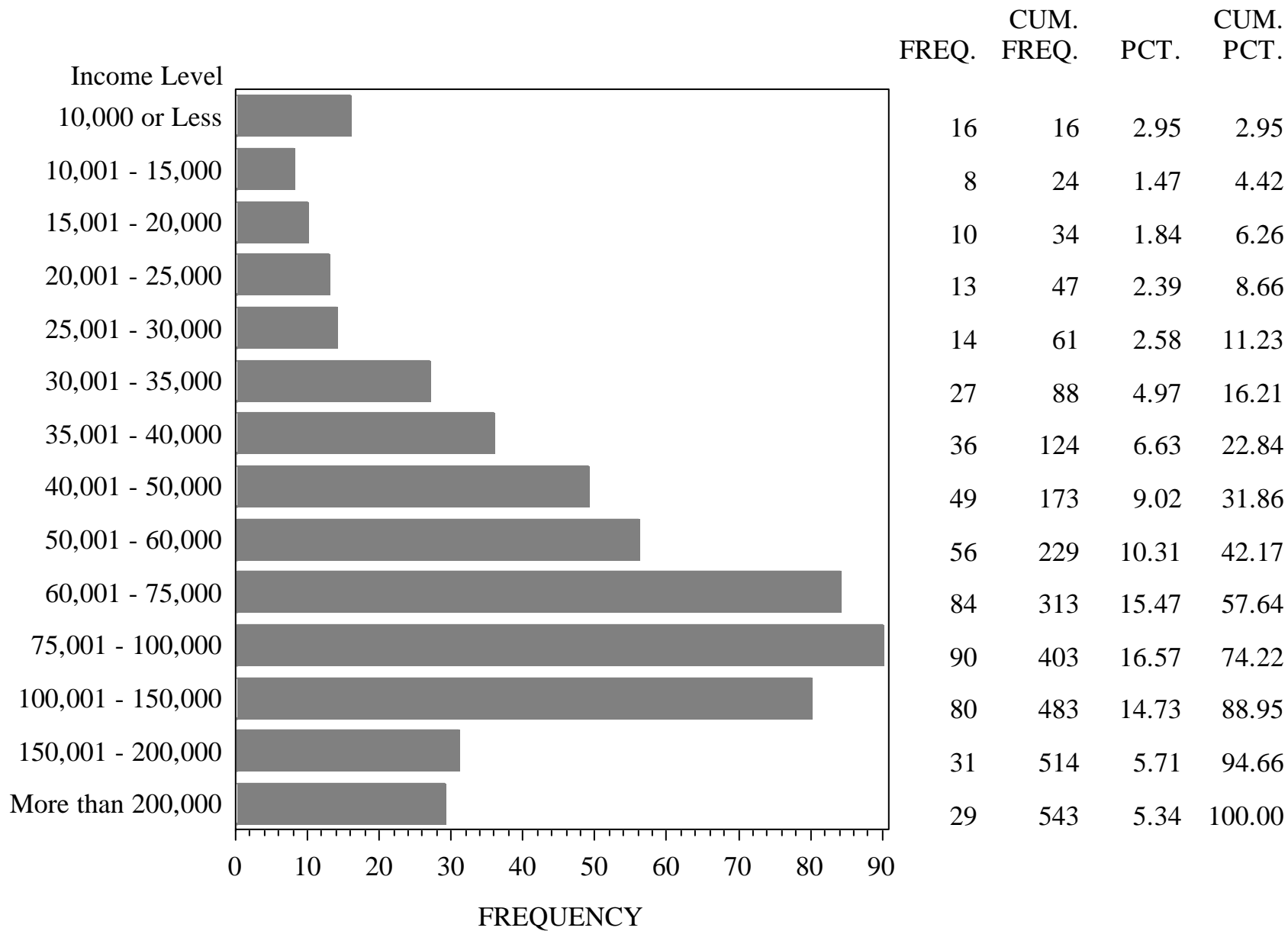


Table 18
Family Income by Student Type
(Percentages)

Family Income	New Freshmen						New Transfers					
	2001	2002	2003	2004	2005	All Years	2001	2002	2003	2004	2005	All Years
10,000 or Less	1.6	1.9	1.8	0.9	1.9	1.6	2.8	2.9	5.2	5.3	4.9	4.0
10,001 - 15,000	2.2	0.9	1.3	1.5	1.4	1.5	0.9	2.9	5.2	5.3	1.6	2.9
15,001 - 20,000	3.4	1.2	2.7	1.5	1.4	2.0	3.7	2.5	1.5	3.0	2.7	2.8
20,001 - 25,000	4.1	2.2	2.7	3.2	1.1	2.7	5.1	4.6	2.2	5.3	4.9	4.5
25,001 - 30,000	4.1	5.6	3.5	3.7	2.2	3.8	6.5	5.8	5.2	3.8	3.3	5.1
30,001 - 35,000	4.4	4.0	2.7	3.5	4.2	3.7	7.4	5.8	2.2	4.5	6.6	5.6
35,001 - 40,000	5.3	7.2	6.6	8.3	7.5	7.1	9.3	8.8	9.7	5.3	4.9	7.7
40,001 - 50,000	10.0	10.3	10.4	10.4	8.9	10.0	13.9	11.3	14.9	8.3	9.3	11.6
50,001 - 60,000	9.7	10.0	11.3	8.2	10.5	9.8	12.0	12.1	11.9	9.1	9.9	11.2
60,001 - 75,000	12.8	19.9	11.9	15.6	14.7	14.9	13.9	11.3	6.7	15.2	17.0	12.9
75,001 - 100,000	19.1	16.5	18.6	17.1	18.8	18.0	11.1	12.9	15.7	12.1	12.1	12.6
100,001 - 150,000	15.9	11.8	13.5	13.7	16.6	14.2	5.6	10.8	6.7	11.4	11.0	9.1
150,001 - 200,000	4.1	4.4	6.2	6.1	5.0	5.3	4.2	3.3	3.7	3.8	7.1	4.4
More than 200,000	3.4	4.0	6.9	6.3	5.8	5.5	3.7	5.0	9.0	7.6	4.4	5.5
Total	100.0	100.0	100.0	100.0	100.0	100.0	100.0	100.0	100.0	100.0	100.0	100.0

Table 19
Level of Concern About Ability to Finance Education at UNCA

Student Type		Level of Concern						Total	
		No Concern		Some Concern		Major Concern			
		N	Percent	N	Percent	N	Percent	N	Percent
New Freshmen	2001	163	43.1	180	47.6	35	9.3	378	100.0
	2002	140	36.9	201	53.0	38	10.0	379	100.0
	2003	216	40.2	273	50.8	48	8.9	537	100.0
	2004	272	44.2	277	45.0	67	10.9	616	100.0
	2005	196	46.1	192	45.2	37	8.7	425	100.0
New Transfers	2001	73	29.8	124	50.6	48	19.6	245	100.0
	2002	95	32.4	140	47.8	58	19.8	293	100.0
	2003	48	29.4	83	50.9	32	19.6	163	100.0
	2004	59	37.1	73	45.9	27	17.0	159	100.0
	2005	61	28.2	113	52.3	42	19.4	216	100.0
Cohort Totals									
	2001	236	37.9	304	48.8	83	13.3	623	100.0
	2002	235	35.0	341	50.7	96	14.3	672	100.0
	2003	264	37.7	356	50.9	80	11.4	700	100.0
	2004	331	42.7	350	45.2	94	12.1	775	100.0
	2005	257	40.1	305	47.6	79	12.3	641	100.0

Table 20
New Student Survey
Do you have a computer?

Student Type		Yes, total		Yes, both a desktop and laptop		Yes, a desktop		Yes, a laptop		No		Don't know yet	
		N	%	N	%	N	%	N	%	N	%	N	%
New Freshmen	2001	377	79.6	-	-	200	53.1	100	26.5	45	11.9	32	8.5
	2002	381	82.4	-	-	183	48.0	131	34.4	38	10.0	29	7.6
	2003	537	88.1	-	-	242	45.1	231	43.0	34	6.3	30	5.6
	2004	617	90.6	-	-	217	35.2	342	55.4	33	5.3	25	4.1
	2005	425	93.6	21	4.9	89	20.9	288	67.8	16	3.8	11	2.6
New Transfers	2001	246	75.2	-	-	147	59.8	38	15.4	34	13.8	27	11.0
	2002	293	80.9	-	-	180	61.4	57	19.5	32	10.9	24	8.2
	2003	161	82.0	-	-	76	47.2	56	34.8	26	16.1	3	1.9
	2004	159	85.5	-	-	79	49.7	57	35.8	15	9.4	8	5.0
	2005	217	90.8	20	9.2	91	41.9	86	39.6	12	5.5	8	3.7
Cohort Total	2001	623	77.8	-	-	347	55.7	138	22.2	79	12.7	59	9.5
	2002	674	81.8	-	-	363	53.9	188	27.9	70	10.4	53	7.9
	2003	698	86.7	-	-	318	45.6	287	41.1	60	8.6	33	4.7
	2004	776	89.6	-	-	296	38.1	399	51.4	48	6.2	33	4.3
	2005	642	92.7	41	6.4	180	28.0	374	58.3	28	4.4	19	3.0

Table 21
New Student Survey

If you have computer, will it be connected to the Internet?

Student Type		Yes		No		Don't know yet	
		N	%	N	%	N	%
New Freshmen	2002	532	83.4	24	3.8	82	12.9
	2003	411	87.4	11	2.3	48	10.2
	2004	489	87.8	10	1.8	58	10.4
	2005	330	83.5	9	2.3	56	14.2
New Transfers	2002	342	73.4	54	11.6	70	15.0
	2003	100	74.6	18	13.4	16	11.9
	2004	87	64.0	16	11.8	33	24.3
	2005	137	69.9	23	11.7	36	18.4
Cohort Total	2002	874	79.2	78	7.1	152	13.8
	2003	511	84.6	29	4.8	64	10.6
	2004	576	83.1	26	3.8	91	13.1
	2005	467	79.0	32	5.4	92	15.6



NEW STUDENT SURVEY

This survey is designed to help us better understand the needs and interests of students enrolling at UNCA for the first time. These data will be used for research and planning purposes. Your responses will be kept strictly confidential. Data will not be released so that any individual can be identified.

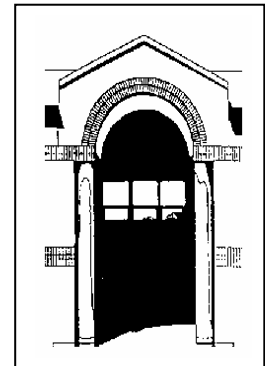
Please provide the following information about the colleges to which you applied.

1. How many colleges did you apply to this year, including UNCA?

_____ Number

2. Which colleges, other than UNCA, did you apply?

	College Name	State
(a)	_____	_____
(b)	_____	_____
(c)	_____	_____
(d)	_____	_____
(e)	_____	_____



3. Is UNCA your: (Circle One)

- 1 First Choice
- 2 Second Choice
- 3 Less Than Second Choice

4. The following statements reflect the goals of many college students. Which of these goals are important to you? (Circle all that apply)

- 01 To prepare for a career or good job
- 02 To take part in college social life
- 03 To develop an appreciation & enjoyment of art, music, & literature
- 04 To develop an understanding & appreciation of science & technology
- 05 To acquire a broad cultural and literary education
- 06 There was nothing better to do
- 07 Wanted to get away from home
- 08 To gain experience and skill in relating to other people
- 09 To develop my ability to think critically
- 10 To develop my ability to write and speak effectively

5. Which of the above goals are the most important to you? (Put number of item in appropriate box below)

Most Important

2nd Most Important

3rd Most Important

6. Do you currently intend to earn a bachelor's degree?

- 1 No
- 2 Undecided
- 3 Yes

→ 7. (If Yes) Will you earn your degree at UNCA?

- 1 Yes
- 2 No - I will transfer to: _____
- 3 Undecided

8. Below are some reasons that might have influenced your decision to select UNCA over other schools. How important was each reason in your decision to enroll at UNCA?

(Circle one)

	Very Important	Somewhat Important	Not Important
a) Advice of parents or relatives	VI	SI	NI
b) A teacher or counselor advised me.....	VI	SI	NI
c) UNCA has a very good academic reputation.....	VI	SI	NI
d) I was offered financial assistance.....	VI	SI	NI
e) Someone who had been here before advised me	VI	SI	NI
f) UNCA has low tuition and fees	VI	SI	NI
g) Location of UNCA.....	VI	SI	NI
h) Liberal arts emphasis	VI	SI	NI
i) UNCA has the major I'm interested in.....	VI	SI	NI
j) Social climate and activities at UNCA.....	VI	SI	NI
k) UNCA's small school environment	VI	SI	NI
l) UNCA's Undergraduate Research program	VI	SI	NI

9. Which best describes the area in which you lived during high school? (Circle only one)

- 1 Rural area
- 2 Small town (20,000 or less)
- 3 Moderate size city (20,001-60,000)
- 4 Large city (60,001-100,000)
- 5 Urban area (more than 100,000)

10. Do your plans include employment during your first semester?

- 1 No
- 2 Yes

→ (If Yes) How many hours per week will you be employed on average?

_____ Hours

11. Indicate the educational attainment of each parent or guardian? (Circle only one response for each column)

	Father/ Male Guardian	Mother/ Female Guardian
Less Than High School Graduate.....	1	1
High School Graduate.....	2	2
Some College/No Degree.....	3	3
Two-Year Associate Degree.....	4	4
Four-Year Baccalaureate Degree	5	5
Some Graduate or 1st Prof Coursework but No Degree.....	6	6
Master's Degree	7	7
Doctorate or 1st Prof Degree (e.g. Medicine, Dentistry Law, etc.).....	8	8

12. What was the amount of your parents' or guardian's combined pre-tax income for last year? Please try to answer, even if you are financially independent. *(Circle only one response)*

- | | | | |
|----|---------------------|----|-----------------------|
| 01 | \$10,000 or Less | 08 | \$40,001 - \$50,000 |
| 02 | \$10,001 - \$15,000 | 09 | \$50,001 - \$60,000 |
| 03 | \$15,001 - \$20,000 | 10 | \$60,001 - \$75,000 |
| 04 | \$20,001 - \$25,000 | 11 | \$75,001 - \$100,000 |
| 05 | \$25,001 - \$30,000 | 12 | \$100,001 - \$150,000 |
| 06 | \$30,001 - \$35,000 | 13 | \$150,001 - \$200,000 |
| 07 | \$35,001 - \$40,000 | 14 | More than \$200,000 |

13. How many people do your parents or guardians currently support in their household? *Include yourself and parents or guardians, if applicable.*

_____ Number

14. How many of your parents' or guardians' dependents *including yourself* are currently enrolled in college?

_____ Number

15. Do you have any concern about your ability to finance your education at UNCA?

- 1 None (I am confident that I will have enough money)
- 2 Some Concern (I will probably have enough money)
- 3 Major Concern (I will probably not have enough money)

16. Computer and Internet:

(a) This fall, will you have a computer for your personal use at this institution? *(Please circle only one response.)*

- 1 Yes, a laptop
- 2 Yes, a desktop
- 5 Both a laptop and desktop
- 3 No
- 4 Don't know yet

(b) *(If Yes)* will you be able to connect your computer to the Internet at this institution? *(Please circle only one response.)*

- 1 Don't know yet
- 2 No
- 3 Yes

Please write your name and social security number below. All information from this survey is **strictly confidential** and will be used for planning and research purposes only.

First Name: _____ Last Name: _____

Social Security Number: ____ - ____ - ____