

*New Student Survey*  
*Fall 2004*



## Contents

Executive Summary .....	1
Table 1 - Survey Response Rate .....	2
Table 2 - Most Important College Goals by Student Type .....	3
Figure 1 - New Student College Goals by Priority Grouping: .....	4
Table 3 - Admissions Selection Choice of UNCA .....	5
Table 4 - Number of Colleges Applied to Counting UNCA .....	5
Table 5 - Which Colleges, Other Than UNCA Did You Apply?.....	6
Table 6 - New Student Degree Intentions by Student Type.....	7
Table 7 - New Student Degree Intentions by Race .....	7
Table 8 - Admissions Scores of New Freshmen by Degree Intention .....	8
Figure 2 - New Freshmen Predicted GPA by Degree Intention .....	9
Table 9 - New Freshmen Retention Rates by Degree Intention, Cohort Year, & Follow-up Year .....	10
Table 10 - Freshmen Graduation Rate by Degree Intention .....	10
Table 11 - Schools to Which New Students Intend to Transfer.....	11
Table 12 - Reasons for Enrolling at UNCA by Level of Importance.....	12
Table 13 - Reasons for Freshmen Enrolling at UNCA .....	13
Figure 3 - Retention Rate of Students Returning for the Second Year by Hours of Employment.....	14
Table 14 - Employment by Student Type .....	15
Table 15 - New Student Employment, First Year Cum GPA, and Retention to 2nd Year .....	16
Table 16 - Area in Which Students Lived During High School .....	17
Figure 4 - Highest Parental Level of Education for New Undergraduates.....	18
Table 17 - Parent's with a Baccalaureate Degree or Higher.....	19
Figure 5 - Family Income of New Fall Undergraduates.....	20
Table 18 - Family Income by Student Type.....	21
Table 19 - Level of Concern about Ability to Finance Education at UNCA .....	22
Table 20 - Computer Ownership .....	23
Table 21 - Internet Connectivity .....	23

Appendix: Survey Instrument

*Executive Summary  
New Student Survey  
Fall 2004*

In an effort to better understand the characteristics of our incoming students, the New Student Survey is administered to all new degree-seeking students each fall semester. These data help to describe the college goals, degree-intentions, socio-economic status, and employment activity of entering students. Freshmen data from selected questions are used in a system-wide survey project that encompasses all the 16 campuses in the UNC system. Since 1993, we have collected usable survey responses from 89% of freshmen and 73% of transfer students.

Seventy-seven percent of Fall 2004 freshmen indicated UNCA was their first college choice. Four percent indicated UNCA was less than their second choice. When asked to which schools other than UNCA they applied, freshmen most frequently named Appalachian State, UNC Chapel Hill, North Carolina State University, UNC Wilmington, UNC Greensboro and UNC Charlotte.

The following factors are consistently reported by students as important reasons for enrolling at UNCA: (1) academic reputation; (2) small school environment; (3) location; (4) choice of major; (5) social climate/activities; (6) liberal arts emphasis; and (7) cost.

The most frequently cited college goals of freshmen are as follows:

	2001	2002	2003	2004
Prepare For Career or Good Job	81.6	82.5	83.8	83.7
Take Part in College Social Life	37.2	40.1	39.5	41.4
Acquire Broad Cultural/Literary Educ	31.4	33.2	33.9	35.4
Dev Apprec, Enjoy of Art, Music, & Lit	23.1	27.6	21.4	29.0
Dev Ability to Write/Speak Effectively	25.8	20.2	23.6	28.2

The percentage of new freshmen indicating a clear intention to graduate from UNCA increased from 47% in 2003 to 52% in 2004. Eighty-nine percent of 2004 transfers enrolled with the intention of graduating from UNCA. Approximately 40% of freshmen are "undecided" about either earning a degree or plans to transfer and 6% intend to transfer and receive a degree elsewhere.

Fall 2004 freshmen reporting an intention to transfer from UNCA most often indicate a desire to enroll at NCSU (41%) or UNC Chapel Hill (27%). Historically, 62% of freshmen reporting an intention to graduate from UNCA receive a degree within five years. Among those intending to transfer, 31% change their plans and graduate from UNCA.

Forty percent of new 2004 freshmen had plans for a mean of 17 hours of employment per week. The rate of employment is greater for transfer students (72%) who plan to work a mean of 23 hours per week. Eleven percent of new freshmen and 49% of new transfer students planned to work 20 or more hours per week.

Among new freshmen, 74% have a least one parent with a four-year college degree. The median family income of new 2004 freshmen is \$60,001 - \$75,000.

Ninety-one percent of new freshmen reported that they have a computer for personal use. Of those, 88% said they have Internet access. Eighty-six percent of new transfers have a computer, 64% of whom have Internet access.

**Table 1**  
**Survey Response Rate**

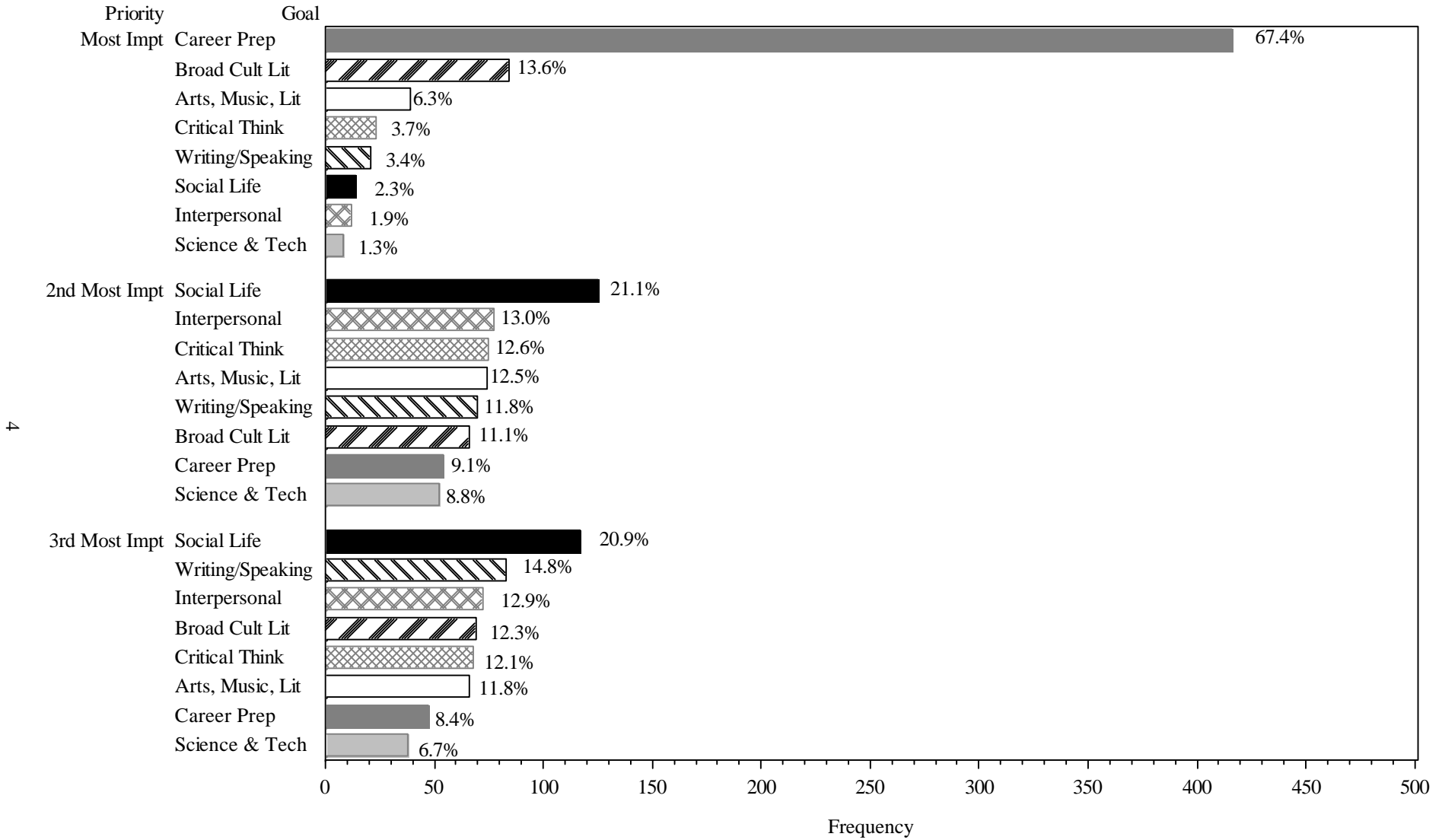
Fall Semester	Student Type						All Students		
	New Freshmen			Transfer			Enrolled Students	Completed Survey	Response Rate
	Enrolled Students	Completed Survey	Response Rate	Enrolled Students	Completed Survey	Response Rate			
1993	397	338	84.5	301	237	78.2	698	575	81.8
1994	398	388	97.5	358	295	82.4	756	683	90.3
1995	397	387	96.5	350	305	86.4	747	692	91.8
1996	456	412	89.9	253	191	74.9	709	603	84.6
1997	473	438	92.4	312	260	83.1	785	698	88.7
1998	480	408	85.0	326	229	70.2	806	637	79.0
1999	461	382	82.5	286	186	64.8	747	568	75.7
2000	501	433	86.1	302	175	57.8	803	608	75.4
2001	454	379	83.3	333	248	74.5	787	627	79.6
2002	428	381	88.8	382	297	77.7	810	678	83.6
2003	599	540	90.2	304	164	53.9	903	704	78.0
2004	707	619	87.6	227	161	70.9	934	780	83.5
All Years	5,751	5,105	88.5	3,734	2,748	73.4	9,485	7,853	82.6

**Table 2**  
**Most Important College Goals by Student Type**  
**(Data Expressed as Percentage of Students Selecting Up to Three Goals)**

College Goal	New Freshmen					Transfer				
	2000	2001	2002	2003	2004	2000	2001	2002	2003	2004
Prepare For Career or Good Job	90.3	81.6	82.5	83.8	83.7	85.0	85.8	89.5	82.5	87.5
Take Part in College Social Life	42.0	37.2	40.1	39.5	41.4	17.3	19.1	17.3	10.0	13.8
Acquire Broad Cultural/Literary Educ	30.7	31.4	33.2	33.9	35.4	31.8	33.3	34.6	41.3	37.5
Dev Apprec, Enjoy of Art, Music, & Lit	19.6	23.1	27.6	21.4	29.0	20.8	23.6	23.7	20.6	25.0
Dev Ability to Write/Speak Effectively	21.9	25.8	20.2	23.6	28.2	23.1	30.5	28.8	35.6	30.0
Dev Ability to Think Critically	27.0	27.9	28.4	33.0	26.9	48.6	43.5	34.2	45.0	40.0
Gain Experience in Relating to People	33.5	33.8	33.2	29.1	26.1	24.9	24.8	24.4	23.8	25.0
Dev Understand of Science and Tech	15.7	20.2	17.8	18.4	15.9	23.7	19.1	18.0	16.9	15.0
Wanted to Get Away From Home	12.2	10.4	10.3	10.1	8.9	2.9	3.7	4.1	5.6	2.5
Nothing Better to do	1.8	1.9	1.9	1.7	1.8	1.2	0.4	1.4	1.3	1.3

# Figure 1

## New Student College Goals by Priority Grouping Fall 2004 New Freshmen



**Table 3**  
**Admissions Selection Choice of UNCA**  
**(Percentages)**

Is UNCA Your:	New Freshmen					Transfer				
	2000	2001	2002	2003	2004	2000	2001	2002	2003	2004
First Choice	82.0	74.3	75.3	73.4	77.0	91.3	91.8	90.1	91.8	92.5
Second Choice	14.3	19.6	19.9	21.0	18.6	6.9	6.9	7.8	7.6	6.2
Less Than Second Choice	3.7	6.1	4.8	5.6	4.4	1.7	1.2	2.0	0.6	1.2
Total	100.0	100.0	100.0	100.0	100.0	100.0	100.0	100.0	100.0	100.0

**Table 4**  
**Number of Colleges Applied to Counting UNCA: New Freshmen**

Region	Number of Colleges									
	2000		2001		2002		2003		2004	
	N	Mean	N	Mean	N	Mean	N	Mean	N	Mean
Eastern	29	2.8	22	4.0	26	2.2	27	3.1	27	2.5
Piedmont	151	2.8	150	2.7	137	2.9	210	2.9	273	3.2
Western	167	2.5	144	2.5	148	2.3	185	2.4	195	2.4
Out-of-State	86	4.0	63	3.5	70	3.8	118	4.1	124	3.8
Total	433	2.9	379	2.8	381	2.8	540	3.0	619	3.0

**Table 5**  
**To which colleges other than UNCA did you apply?**  
**Fall 2004 Freshmen**

School	N	PERCENT
Appalachian State University	152	12.5
University of North Carolina at Chapel Hill	97	8.0
North Carolina State University	91	7.5
University of North Carolina at Wilmington	61	5.0
University of North Carolina at Greensboro	60	4.9
University of North Carolina at Charlotte	51	4.2
Western Carolina University	47	3.9
Elon College	36	3.0
East Carolina University	25	2.0
College of Charleston	18	1.5
Wake Forest University	16	1.3
Warren Wilson College	15	1.2
Guilford College	14	1.1
Clemson University	10	0.8
College of William and Mary	10	0.8
Virginia Polytechnic Institute and State Univ	10	0.8
University of Georgia	9	0.7
Auburn University	7	0.6
Brevard College	7	0.6
Colorado College	7	0.6
East Tennessee State University	7	0.6
Gardner-Webb University	7	0.6
Mars Hill College	7	0.6
New York University	7	0.6
Berry College	6	0.5
Davidson College	6	0.5
Lenoir-Rhyne College	6	0.5
Saint Andrews Presbyterian College	6	0.5
University of Colorado at Boulder	6	0.5
University of Tennessee, Knoxville	6	0.5
Asheville - Buncombe Technical Community Coll	5	0.4
Catawba College	5	0.4
Duke University	5	0.4
Foreign Institutions	5	0.4
Furman University	5	0.4
James Madison University	5	0.4
Lees-McRae College	5	0.4
Oberlin College	5	0.4
Queens College	5	0.4
Savannah College of Art and Design	5	0.4
Tulane University	5	0.4
University of Florida	5	0.4
American University	4	0.3
Emerson College	4	0.3
Florida State University	4	0.3
George Mason University	4	0.3
Goucher College	4	0.3
University of Mississippi	4	0.3
University of North Carolina at Pembroke	4	0.3
University of Vermont	4	0.3
University of Virginia	4	0.3
University of the South	4	0.3
West Virginia University	4	0.3
Other (Schools With N <=3 Combined)	309	24.3
Total	1220	100.0

**Table 6**  
**New Student Degree Intentions by Student Type**  
**(Percentages)**

Degree Intentions	New Freshmen					Transfer				
	2000	2001	2002	2003	2004	2000	2001	2002	2003	2004
Earn Degree at UNCA	52.0	39.1	45.1	47.2	52.3	74.9	82.3	80.8	78.7	89.4
Earn Degree But Transfer	8.3	11.1	7.1	7.2	6.0	6.9	3.6	3.7	2.4	3.7
Undecided About Earning Degree	16.6	15.8	19.9	20.2	16.8	6.3	3.2	2.7	4.9	3.7
Undecided About Transferring	21.9	31.1	26.5	24.4	23.4	9.1	9.3	10.4	11.0	1.9
Will Not Earn Degree	0.9	2.4	1.3	0.9	1.3	2.3	1.6	1.0	1.2	1.2
No Response	0.2	0.5	0.0	0.0	0.2	0.6	0.0	1.3	1.8	0.0
Total	100.0	100.0	100.0	100.0	100.0	100.0	100.0	100.0	100.0	100.0

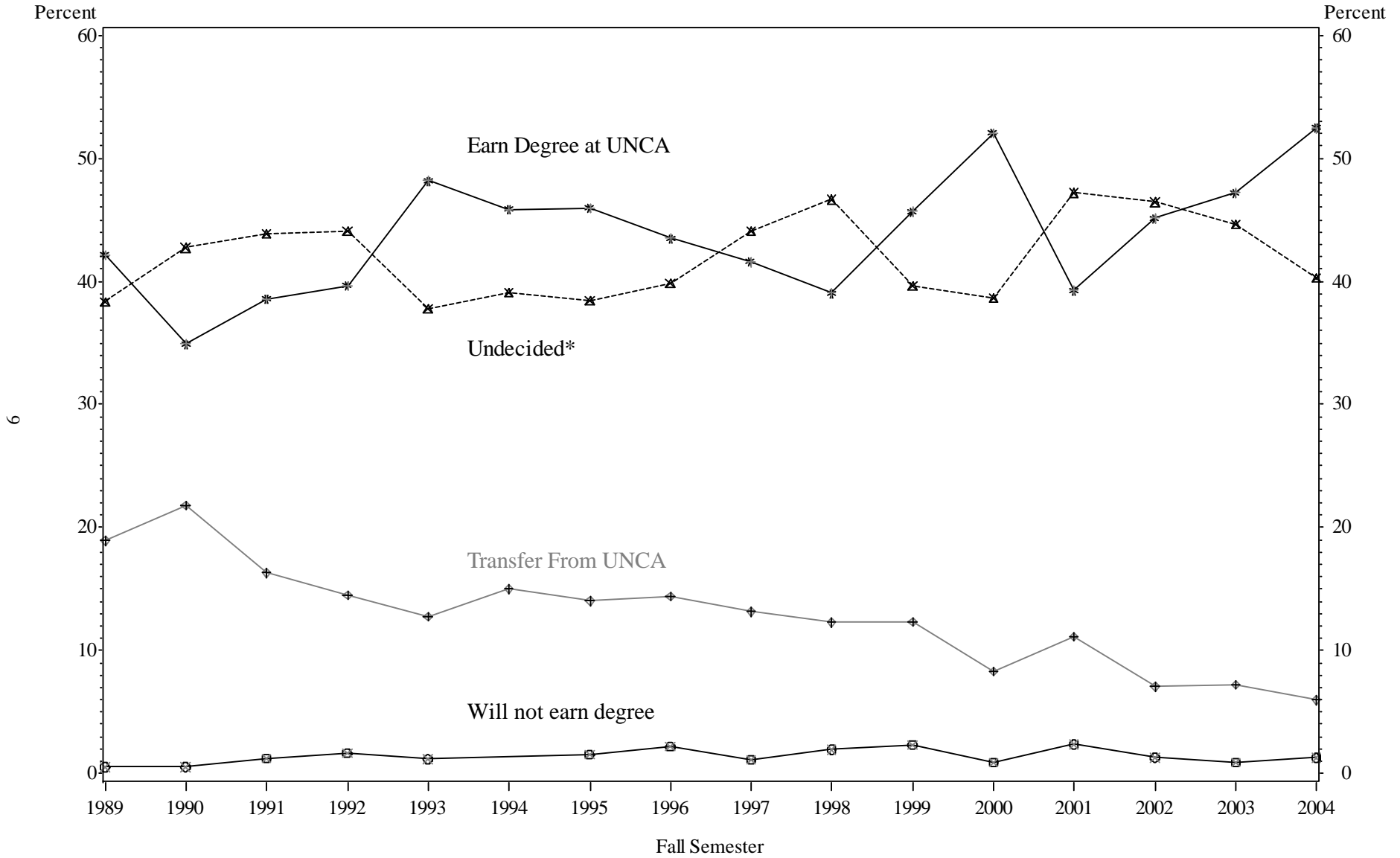
**Table 7**  
**New Student Degree Intentions by Race/Ethnicity**  
**(Percentages)**

Degree Intentions	Minority					White				
	2000	2001	2002	2003	2004	2000	2001	2002	2003	2004
Earn Degree at UNCA	50.0	55.1	52.9	60.0	56.5	59.0	56.5	61.5	53.9	60.5
Earn Degree But Transfer	13.6	10.2	7.8	6.2	9.7	7.5	7.9	5.5	6.2	5.0
Undecided About Earning Degree	9.1	8.2	9.8	9.2	14.5	14.1	11.2	12.6	17.5	14.0
Undecided About Transferring	27.3	22.4	23.5	21.5	19.4	17.6	22.2	18.9	21.3	19.0
Will Not Earn Degree	0.0	4.1	5.9	1.5	0.0	1.4	1.9	0.8	0.9	1.4
No Response	0.0	0.0	0.0	1.5	0.0	0.4	0.3	0.6	0.2	0.1
Total	100.0	100.0	100.0	100.0	100.0	100.0	100.0	100.0	100.0	100.0

**Table 8**  
**Admission Scores of New Freshmen by Degree Intention**

Degree Intention	2000		2001		2002		2003		2004	
	SAT Mean	HS Rank Mean	SAT Mean	HS Rank Mean	SAT Mean	HS Rank Mean	SAT Mean	HS Rank Mean	SAT Mean	HS Rank Mean
Earn Degree at UNCA	1,180	81.7	1,176	82.6	1,170	79.7	1,174	79.1	1,188	77.8
Earn Degree But Transfer	1,156	78.6	1,138	77.9	1,161	78.3	1,143	76.2	1,118	76.7
Undecided About Earning Degree	1,122	74.3	1,153	77.9	1,153	75.9	1,161	74.7	1,145	71.9
Undecided About Transferring	1,137	77.4	1,164	80.1	1,174	76.9	1,166	73.3	1,177	77.3
Will Not Earn Degree	1,125	88.3	1,104	77.8	1,096	82.8	1,198	81.8	1,101	78.6
Cohort Total	1,158	79.4	1,162	80.4	1,166	78.2	1,167	76.6	1,173	76.6

Figure 2: New Freshmen Degree Intention by Year



\*Undecided includes those undecided about earning a degree at UNCA or at all

**Table 9**  
**New Freshmen Retention Rates by Degree Intention, Cohort Year, & Follow-up Year**

Follow-up Year		Cohort Year									All Years
		1995	1996	1997	1998	1999	2000	2001	2002	2003	Pct Return
		Pct Return	Pct Return	Pct Return	Pct Return	Pct Return	Pct Return	Pct Return	Pct Return	Pct Return	Pct Return
1	Earn Degree at UNCA	77.4	83.7	79.4	82.4	83.9	86.2	81.8	80.2	85.1	82.5
	Earn Degree But Transfer	64.8	72.9	64.9	70.0	76.6	69.4	69.0	74.1	64.1	69.3
	Undecided About Earning Degree	85.1	81.7	73.3	72.7	72.7	84.7	78.3	73.7	79.8	77.9
	Undecided About Transferring	74.3	77.7	81.0	77.4	74.0	70.5	75.4	76.2	80.3	76.6
	Year Total	75.7	80.3	76.9	77.7	78.8	81.1	77.7	77.4	81.3	78.7
2	Earn Degree at UNCA	69.5	71.3	64.4	75.5	79.3	75.1	79.1	75.0	-	73.5
	Earn Degree But Transfer	29.6	40.7	49.1	48.0	51.1	47.2	50.0	48.1	-	44.9
	Undecided About Earning Degree	61.7	63.3	65.3	53.0	56.4	62.5	71.7	67.1	-	62.8
	Undecided About Transferring	60.4	60.2	58.6	60.5	58.3	56.8	63.6	69.3	-	61.0
	Year Total	60.4	62.8	61.0	63.7	66.9	66.6	69.6	69.9	-	65.0
3	Earn Degree at UNCA	62.1	66.3	56.7	67.3	71.3	69.3	73.6	-	-	66.6
	Earn Degree But Transfer	29.6	35.6	45.6	46.0	44.7	41.7	42.9	-	-	40.6
	Undecided About Earning Degree	59.6	56.7	62.7	54.5	52.7	65.3	70.0	-	-	60.5
	Undecided About Transferring	57.4	53.4	59.5	60.5	60.4	49.5	59.3	-	-	57.4
	Year Total	55.9	57.0	57.0	60.4	62.4	61.9	64.9	-	-	59.9

**Table 10**  
**Freshmen Graduation Rate by Degree Intention: 1995-1999**

Degree Intention	Freshmen Cohort					Total
	1995	1996	1997	1998	1999	
Earn Degree at UNCA	62.1	64.0	55.6	62.3	66.7	62.1
Earn Degree But Transfer	25.9	28.8	36.8	32.0	31.9	31.1
Undecided About Earning Degree	57.4	61.7	54.7	51.5	50.9	55.1
Undecided About Transferring	56.4	47.6	59.0	53.2	53.1	54.0
Cohort Total	54.9	54.3	53.8	53.9	56.5	54.6

**Table 11**  
**Schools to Which New Freshmen Intend to**  
**Transfer**  
**Fall 2004**

Will Transfer To:	N	Percent
North Carolina State University	15	40.5
University of North Carolina at Chapel Hill	10	27.0
Unknown Fice Code - North	3	8.1
Auburn University	1	2.7
New York University	1	2.7
Duke University	1	2.7
Western Carolina University	1	2.7
University of North Carolina at Wilmington	1	2.7
Clemson University	1	2.7
Belmont University	1	2.7
Asheville - Buncombe Technical Community Coll	1	2.7
Liberty University	1	2.7
<b>Total</b>	<b>37</b>	<b>100.0</b>

**Table 12**  
**Reasons for Enrolling at UNCA by Level of Importance**  
**Fall 2004**

Reasons for Selecting UNCA	New Freshmen			Transfer		
	Not Important	Somewhat Important	Very Important	Not Important	Somewhat Important	Very Important
	Percent	Percent	Percent	Percent	Percent	Percent
Advice of parents or relatives	26.7	53.0	20.3	49.3	34.5	16.2
Advice of Teacher or Counselor	51.7	37.7	10.6	67.6	24.1	8.3
UNCA has very good academic reputation	3.9	32.8	63.3	6.6	31.1	62.3
I was offered financial assistance	54.9	24.7	20.4	43.8	25.7	30.6
Someone who had been before advised me	45.0	33.9	21.1	49.3	31.9	18.8
UNCA has low tuition and fees	20.5	41.1	38.4	14.8	34.2	51.0
Location of UNCA	7.0	30.7	62.3	1.9	17.7	80.4
Liberal arts emphasis	20.2	33.3	46.6	30.1	28.8	41.2
UNCA has major I'm interested in	14.5	35.0	50.5	12.4	19.6	68.0
Social climate/activities	14.6	45.6	39.8	32.2	47.0	20.8
UNCA's small school environment	6.4	28.8	64.8	14.6	29.1	56.3
UNCA's Undergrad Research Program	36.8	49.3	14.0	49.7	32.0	18.4

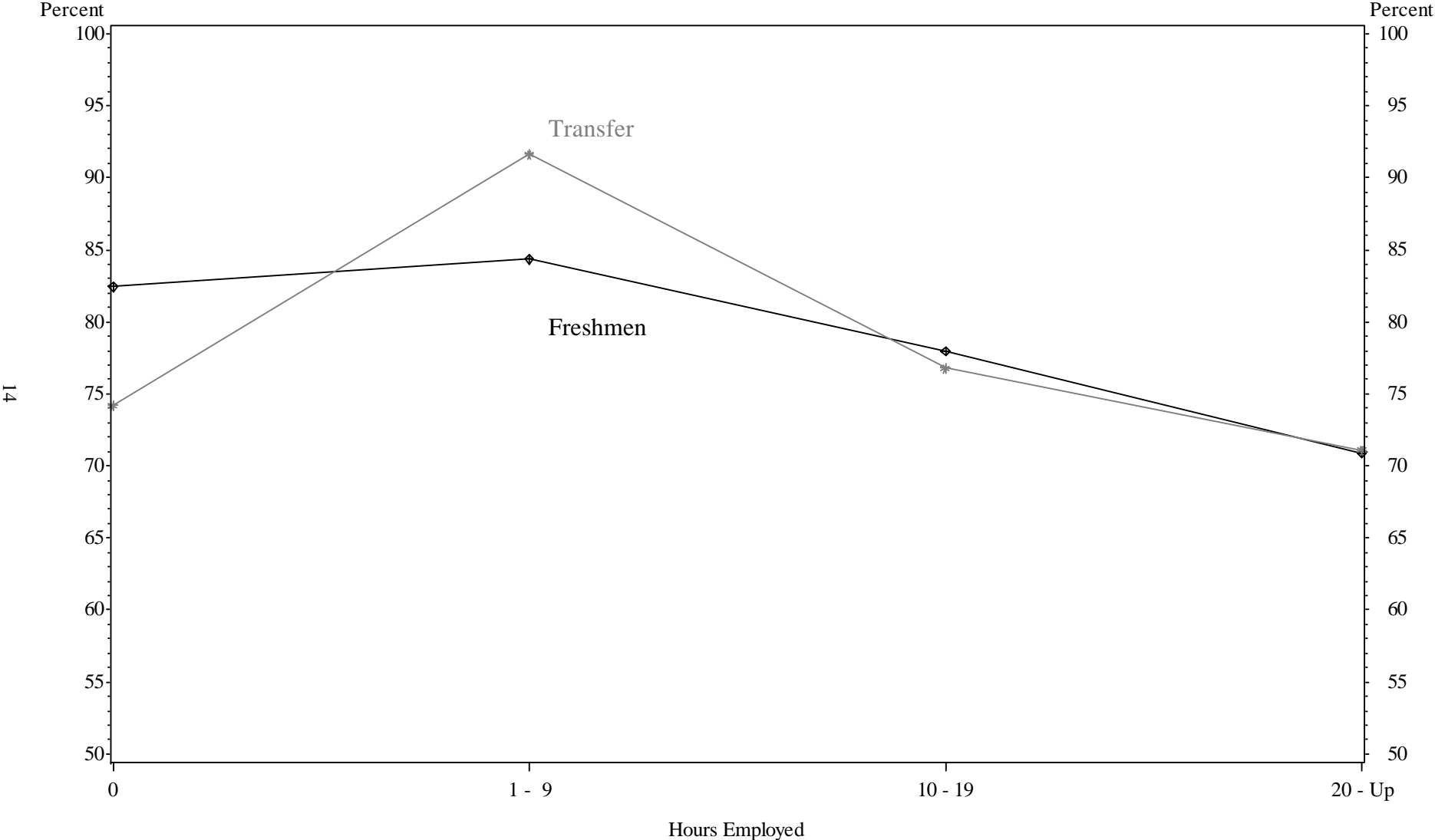
**Table 13**  
**Reasons for Freshmen Enrolling at UNCA**  
**Percent Reporting Reason was "Somewhat Important" or "Very Important"**

Reasons for Selecting UNCA	1994	1995	1996	1997	1998	1999	2000	2001	2002	2003	2004
UNCA has very good academic reputation	97.1	95.8	96.3	97.2	95.0	92.9	93.7	93.5	94.7	94.6	96.1
UNCA's small school environment	94.5	93.5	92.1	93.3	90.6	90.0	92.9	89.8	89.9	90.9	93.7
Location of UNCA	94.0	93.4	91.9	91.0	93.3	92.6	92.0	91.1	93.4	92.7	93.0
UNCA has major I'm interested in	89.0	80.6	83.0	82.5	82.4	86.6	86.6	81.7	82.5	83.3	85.5
Social climate/activities	80.1	79.8	77.0	80.3	79.6	80.2	83.9	81.3	81.4	81.5	85.4
Liberal arts emphasis	66.4	63.6	62.8	67.5	62.3	69.1	69.6	68.2	77.1	76.3	79.8
UNCA has low tuition and fees	86.5	85.3	82.8	83.8	80.8	83.9	81.3	80.9	81.1	80.7	79.5
Advice of parents or relatives	77.2	69.9	77.2	71.1	73.6	76.2	73.8	77.7	78.4	76.5	73.3
UNCA's Undergrad Research Program	67.5	63.2	60.1	58.2	60.0	61.0	61.0	60.6	62.2	63.5	63.2
Someone who had been before advised me	56.8	44.1	49.0	50.5	52.2	55.5	49.3	51.0	49.6	50.4	55.0
Advice of Teacher or Counselor	54.8	52.5	50.8	47.8	47.0	55.5	49.1	50.5	49.2	44.7	48.3
I was offered financial assistance	53.2	60.3	52.9	51.9	49.7	52.3	49.4	54.3	46.3	45.3	45.1

### Figure 3: Retention Rate of Students for the Second Year

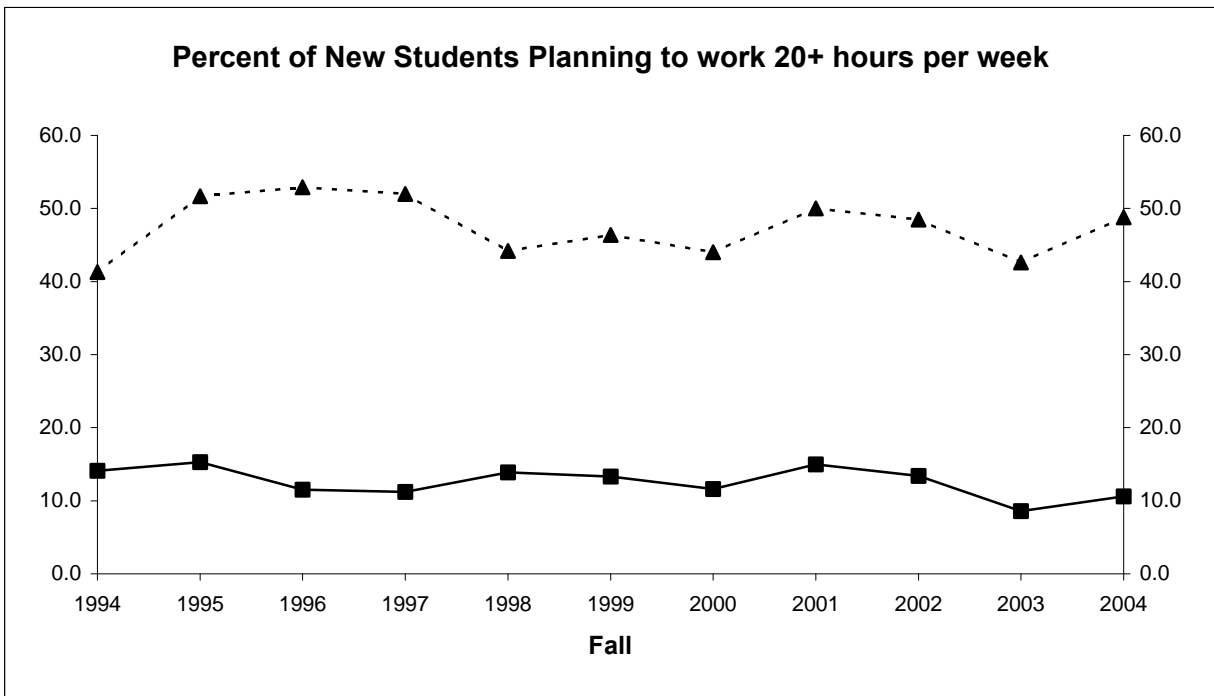
by Hours of Employment and Student Type

(1999-2003 Fall Cohorts Combined)



**Table 14  
Employment by Student Type**

Cohort Year	New Freshmen					Transfer				
	N	Number Employed	Percent	Mean Hours	% 20 Hrs or More	N	Number Employed	Percent	Mean Hours	% 20 Hrs or More
1994	369	198	53.7	15.5	14.1	283	190	67.1	23.6	41.3
1995	365	171	46.8	16.2	15.3	294	225	76.5	24.8	51.7
1996	400	160	40.0	15.8	11.5	187	130	69.5	24.2	52.9
1997	421	181	43.0	14.7	11.2	256	188	73.4	25.2	52.0
1998	403	172	42.7	15.8	13.9	226	158	69.9	22.7	44.2
1999	376	164	43.6	15.4	13.3	183	126	68.9	23.8	46.4
2000	424	178	42.0	15.9	11.6	175	114	65.1	24.1	44.0
2001	373	160	42.9	16.0	15.0	248	187	75.4	23.7	50.0
2002	374	151	40.4	17.0	13.4	297	216	72.7	23.0	48.5
2003	534	214	40.1	15.2	8.6	162	116	71.6	21.5	42.6
2004	603	218	36.2	17.2	10.6	160	115	71.9	23.1	48.8
All Years	4,642	1967	42.4	15.9	12.3	2,471	1765	71.4	23.7	47.7



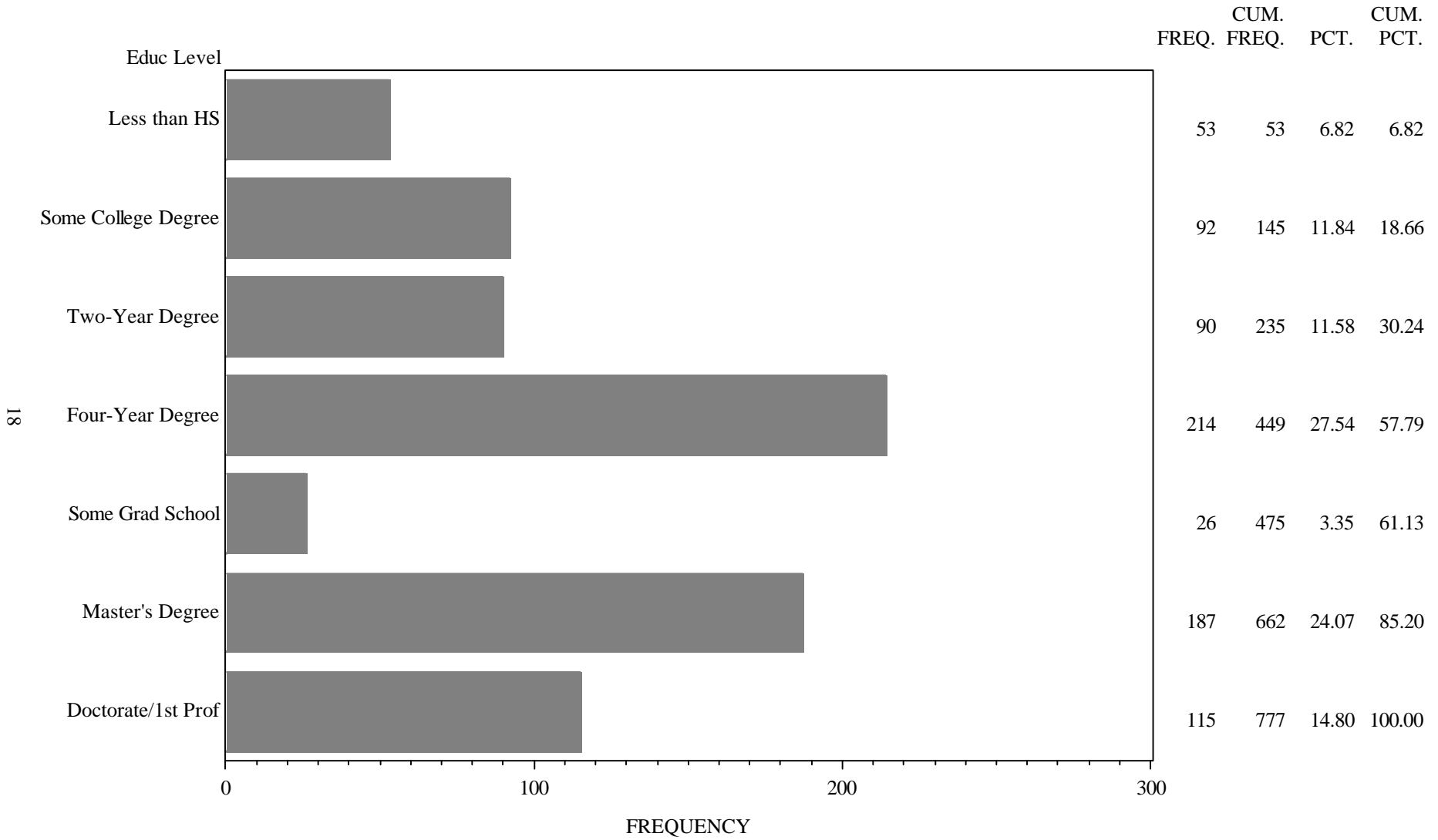
**Table 15**  
**New Student Employment, First Year Cum GPA, and Retention to 2nd Year**  
**(New Fall Students)**

Employment Status		Fall Cohort											
		2000			2001			2002			2003		
		N	Percent Enrolled	Cum GPA	N	Percent Enrolled	Cum GPA	N	Percent Enrolled	Cum GPA	N	Percent Enrolled	Cum GPA
Not Working	New Freshmen	246	82.1	2.8	213	80.8	3.0	223	83.4	3.0	320	82.5	2.8
	Transfer	61	70.5	3.0	61	83.6	3.0	81	64.2	2.7	46	78.3	3.0
	Status Total	307	79.8	2.8	274	81.4	3.0	304	78.3	2.9	366	82.0	2.8
1 - 9 Hours	New Freshmen	18	94.4	2.9	16	87.5	2.7	20	65.0	2.9	20	90.0	2.9
	Transfer	5	100.0	2.6	4	100.0	3.2	4	100.0	2.9	8	87.5	3.4
	Status Total	23	95.7	2.8	20	90.0	2.8	24	70.8	2.9	28	89.3	3.0
10 - 19 Hours	New Freshmen	85	85.9	2.9	75	72.0	2.7	56	76.8	2.5	110	81.8	2.8
	Transfer	33	69.7	3.0	53	79.2	3.1	60	71.7	2.8	38	81.6	3.1
	Status Total	118	81.4	2.9	128	75.0	2.9	116	74.1	2.7	148	81.8	2.9
20 or more Hours	New Freshmen	49	73.5	2.5	56	75.0	2.6	50	72.0	2.3	46	73.9	2.7
	Transfer	75	72.0	3.0	124	68.5	2.8	142	76.1	2.8	69	71.0	2.8
	Status Total	124	72.6	2.8	180	70.6	2.7	192	75.0	2.6	115	72.2	2.8
Cohort Total		572	79.2	2.8	602	77.1	2.9	636	76.3	2.8	657	80.5	2.8

**Table 16**  
**Area in Which Students Lived During High School**  
**(Freshmen & Transfers Combined)**

Size of Area	1999		2000		2001		2002		2003		2004	
	N	Pct	N	Pct	N	Pct	N	Pct	N	Pct	N	Pct
Rural Area	94	16.7	97	16.2	103	16.7	108	16.0	110	15.8	89	11.5
Small Town (less than 20,000)	162	28.8	167	27.8	174	28.2	197	29.2	179	25.7	225	29.0
Moderate Size City (20,001-60,000)	169	30.0	174	29.0	200	32.4	212	31.5	249	35.7	258	33.2
Large city (60,001-100,000)	72	12.8	76	12.7	70	11.3	75	11.1	87	12.5	100	12.9
Urban Area (more than 100,000)	66	11.7	86	14.3	71	11.5	82	12.2	72	10.3	104	13.4
Total	563	100.0	600	100.0	618	100.0	674	100.0	697	100.0	776	100.0

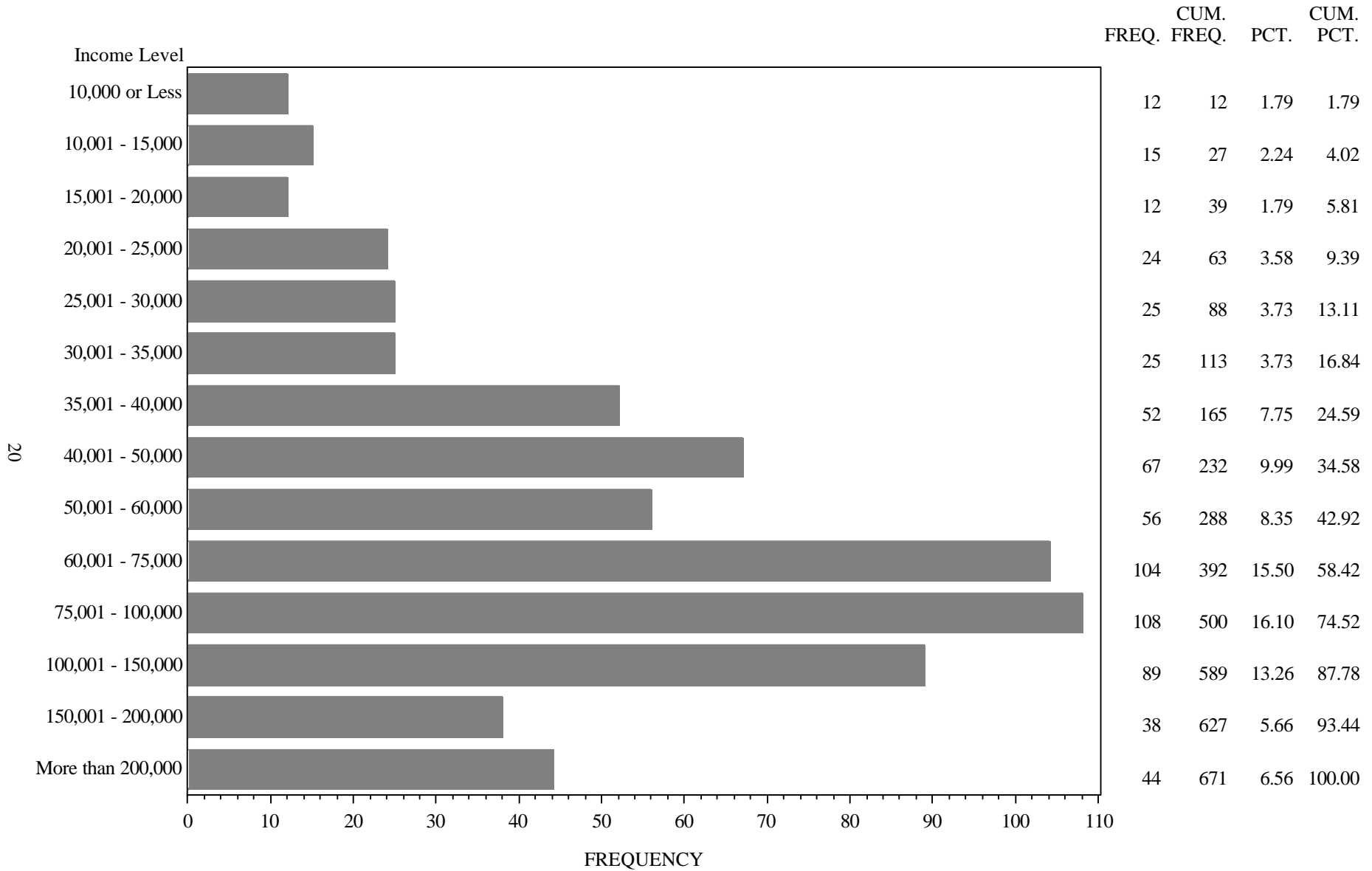
Figure 4: Highest Parental Level of Education for New 2004 Undergraduates



**Table 17**  
**Parents With a Baccalaureate Degree or Higher**

Student Type	N	Mother		Father		Either Parent		
		Have Degree	Percent	Have Degree	Percent	Have Degree	Percent	
New	1999	381	190	49.9	198	52.0	247	64.8
Freshmen	2000	429	215	50.1	245	57.1	288	67.1
	2001	374	188	50.3	216	57.8	256	68.4
	2002	378	192	50.8	224	59.3	265	70.1
	2003	538	307	57.1	324	60.2	384	71.4
	2004	617	375	60.8	384	62.2	454	73.6
Transfer	1999	185	77	41.6	90	48.6	110	59.5
	2000	173	77	44.5	83	48.0	101	58.4
	2001	246	84	34.1	115	46.7	130	52.8
	2002	295	116	39.3	140	47.5	169	57.3
	2003	163	71	43.6	75	46.0	92	56.4
	2004	160	64	40.0	73	45.6	88	55.0
<b>Cohort Totals</b>								
	1999	566	267	47.2	288	50.9	357	63.1
	2000	602	292	48.5	328	54.5	389	64.6
	2001	620	272	43.9	331	53.4	386	62.3
	2002	673	308	45.8	364	54.1	434	64.5
	2003	701	378	53.9	399	56.9	476	67.9
	2004	777	439	56.5	457	58.8	542	69.8

Figure 5: Family Income of New Fall 2004 Undergraduates



**Table 18**  
**Family Income by Student Type**  
**(Percentages)**

Family Income	New Freshmen						Transfer					
	2000	2001	2002	2003	2004	All Years	2000	2001	2002	2003	2004	All Years
10,000 or Less	2.2	1.6	1.9	1.8	0.9	1.6	3.4	2.8	2.9	5.2	5.3	3.7
10,001 - 15,000	1.9	2.2	0.9	1.3	1.5	1.6	0.7	0.9	2.9	5.2	5.3	2.8
15,001 - 20,000	1.6	3.4	1.2	2.7	1.5	2.1	4.8	3.7	2.5	1.5	3.0	3.1
20,001 - 25,000	3.0	4.1	2.2	2.7	3.2	3.0	6.1	5.1	4.6	2.2	5.3	4.7
25,001 - 30,000	4.6	4.1	5.6	3.5	3.7	4.2	4.1	6.5	5.8	5.2	3.8	5.3
30,001 - 35,000	3.5	4.4	4.0	2.7	3.5	3.6	5.4	7.4	5.8	2.2	4.5	5.4
35,001 - 40,000	5.4	5.3	7.2	6.6	8.3	6.8	8.8	9.3	8.8	9.7	5.3	8.5
40,001 - 50,000	14.7	10.0	10.3	10.4	10.4	11.1	9.5	13.9	11.3	14.9	8.3	11.7
50,001 - 60,000	12.5	9.7	10.0	11.3	8.2	10.2	13.6	12.0	12.1	11.9	9.1	11.9
60,001 - 75,000	13.6	12.8	19.9	11.9	15.6	14.7	13.6	13.9	11.3	6.7	15.2	12.2
75,001 - 100,000	20.4	19.1	16.5	18.6	17.1	18.3	17.0	11.1	12.9	15.7	12.1	13.5
100,001 - 150,000	9.5	15.9	11.8	13.5	13.7	13.0	8.8	5.6	10.8	6.7	11.4	8.6
150,001 - 200,000	3.3	4.1	4.4	6.2	6.1	5.0	0.7	4.2	3.3	3.7	3.8	3.2
More than 200,000	3.8	3.4	4.0	6.9	6.3	5.2	3.4	3.7	5.0	9.0	7.6	5.4
<b>Total</b>	<b>100.0</b>	<b>100.0</b>	<b>100.0</b>	<b>100.0</b>	<b>100.0</b>	<b>100.0</b>	<b>100.0</b>	<b>100.0</b>	<b>100.0</b>	<b>100.0</b>	<b>100.0</b>	<b>100.0</b>

**Table 19**  
**Level of Concern About Ability to Finance Education at UNCA**

Student Type		Level of Concern						Total	
		No Concern		Some Concern		Major Concern			
		N	Percent	N	Percent	N	Percent	N	Percent
New Freshmen	2000	168	39.0	220	51.0	43	10.0	431	100.0
	2001	163	43.1	180	47.6	35	9.3	378	100.0
	2002	140	36.9	201	53.0	38	10.0	379	100.0
	2003	216	40.2	273	50.8	48	8.9	537	100.0
	2004	272	44.2	277	45.0	67	10.9	616	100.0
Transfer	2000	57	32.6	79	45.1	39	22.3	175	100.0
	2001	73	29.8	124	50.6	48	19.6	245	100.0
	2002	95	32.4	140	47.8	58	19.8	293	100.0
	2003	48	29.4	83	50.9	32	19.6	163	100.0
	2004	59	37.1	73	45.9	27	17.0	159	100.0
Cohort Totals									
	2000	225	37.1	299	49.3	82	13.5	606	100.0
	2001	236	37.9	304	48.8	83	13.3	623	100.0
	2002	235	35.0	341	50.7	96	14.3	672	100.0
	2003	264	37.7	356	50.9	80	11.4	700	100.0
	2004	331	42.7	350	45.2	94	12.1	775	100.0

**Table 20**  
**New Student Survey**  
**Do you have a computer?**

Student Type		Yes, total		Yes, a desktop		Yes, a laptop		No		Don't know yet	
		N	%	N	%	N	%	N	%	N	%
New Freshmen	2001	377	79.6	200	53.1	100	26.5	45	11.9	32	8.5
	2002	381	82.4	183	48.0	131	34.4	38	10.0	29	7.6
	2003	537	88.1	242	45.1	231	43.0	34	6.3	30	5.6
	2004	617	90.6	217	35.2	342	55.4	33	5.3	25	4.1
Transfer	2001	246	75.2	147	59.8	38	15.4	34	13.8	27	11.0
	2002	293	80.9	180	61.4	57	19.5	32	10.9	24	8.2
	2003	161	82.0	76	47.2	56	34.8	26	16.1	3	1.9
	2004	159	85.5	79	49.7	57	35.8	15	9.4	8	5.0
Cohort Total	2001	623	77.8	347	55.7	138	22.2	79	12.7	59	9.5
	2002	674	81.8	363	53.9	188	27.9	70	10.4	53	7.9
	2003	698	86.7	318	45.6	287	41.1	60	8.6	33	4.7
	2004	776	89.6	296	38.1	399	51.4	48	6.2	33	4.3

**Table 21**  
**New Student Survey**

**If you have computer, will it be connected to the Internet?**

Student Type		Yes		No		Don't know yet	
		N	%	N	%	N	%
New Freshmen	2001	260	86.1	13	4.3	29	9.6
	2002	266	83.4	12	3.8	41	12.9
	2003	411	87.4	11	2.3	48	10.2
	2004	489	87.8	10	1.8	58	10.4
Transfer	2001	129	69.0	25	13.4	33	17.6
	2002	171	73.4	27	11.6	35	15.0
	2003	100	74.6	18	13.4	16	11.9
	2004	87	64.0	16	11.8	33	24.3
Cohort Total	2001	389	79.6	38	7.8	62	12.7
	2002	437	79.2	39	7.1	76	13.8
	2003	511	84.6	29	4.8	64	10.6
	2004	576	83.1	26	3.8	91	13.1