
PROFILE OF 2008-09 GRADUATES

Office of Institutional Research
August 2009



UNC Asheville Graduate Profile 2008-09
EXECUTIVE SUMMARY

- ◆ During the 2008-09 academic year UNC Asheville graduated 612 students, including 6 Master of Liberal Arts students.
- ◆ 59% of 2008-09 graduates were female, 8.9% were minority students and 86.1% were residents of North Carolina, including 51.8% from western North Carolina. Sixty percent of the baccalaureate degrees were awarded to graduates who matriculated as new freshmen. Seventy-eight percent of the graduates were of traditional age (< 25).
- ◆ The UNC Asheville academic area with the most graduates in 2008-09 was Social Sciences (54%), followed by Humanities (31%) and Natural Sciences (26%). Note that Teacher Certification students are included in Social Sciences and that double majors and Teacher Certification students are double counted within respective academic areas.
- ◆ Majors with the most graduates during 2008-09 are given below. (Double majors are counted twice, once within each major.)

<u>Major</u>	<u>Number</u>	<u>Percent</u>
Psychology	87	14.2
Literature	46	7.5
Sociology	43	7.0
Environmental Studies	42	6.9
Mass Communication	37	6.0

- ◆ The percentage of baccalaureate graduates receiving a degree in a traditional liberal arts field was 69.5%.
- ◆ The four, five and six year graduation rates for new full-time fall freshmen from the 2005, 2004 and 2003 cohorts are as follows:

<u>Cohort Year</u>	<u>Graduation Rate</u>
2005 (4 year)	32.7%
2004 (5 year)	51.4%
2003 (6 year)	58.7%

- ◆ Over the last five years, graduates entering as new freshmen took a mean of 4.6 years to graduate. Among the 2008-09 graduates matriculating as new freshmen, 43.4% graduated in four years or less.
- ◆ Over the last five years, graduates who first enrolled as new freshmen completed a mean of 133.4 hours at UNC Asheville. Graduates in Art, Chemistry, Classics, German, Mechatronics and Physics completed 140 or more hours on average.
- ◆ Forty-two of the 2008-09 graduates completed requirements for teacher licensure at graduation. An additional 31 post-baccalaureate students were recommended for licensure during the 2008-09 academic year, including 13 students who were graduated from UNC Asheville prior to completing licensure requirements.
- ◆ 16.5% percent of the 2006-07 baccalaureate graduates participated in a Study Abroad program. Sixty-one percent participated in an undergraduate research or creative project. Fifty-three percent participated in a service learning project.

Table 1
UNC Asheville Graduate Profile
2008-2009 Graduates

Major	Total Grads		Age	Gender		Race/Ethnicity						Region					
			< 25	Female	Male	White	Black	Hispanic	Asian	Am. Indian	Other	Unk	WNC	Piedmont	East NC	Out-of-State	International
	N	%	%	%	%	%	%	%	%	%	%	%	%	%	%	%	%
Psychology	87	14.2	79.3	70.1	29.9	90.8	1.1	2.3			2.3	3.4	48.3	34.5	3.4	13.8	
Literature	46	7.5	89.1	78.3	21.7	89.1	4.3		2.2		2.2	2.2	43.5	28.3	8.7	19.6	
Sociology	43	7.0	69.8	72.1	27.9	86.0	2.3	2.3	4.7		2.3	2.3	48.8	23.3	4.7	23.3	
Education	42	6.9	88.1	78.6	21.4	97.6		2.4					42.9	40.5	9.5	7.1	
Environ Studies	42	6.9	73.8	50.0	50.0	90.5		4.8			2.4	2.4	45.2	31.0	9.5	14.3	
Mass Comm	37	6.0	86.5	56.8	43.2	97.3						2.7	51.4	24.3	8.1	16.2	
Health/Wellness Promotion	36	5.9	69.4	63.9	36.1	94.4	2.8		2.8				55.6	27.8	8.3	8.3	
Art	35	5.7	77.1	77.1	22.9	97.1						2.9	34.3	40.0	14.3	11.4	
History	33	5.4	72.7	48.5	51.5	84.8		6.1	6.1			3.0	69.7	15.2	6.1	9.1	
Mathematics	30	4.9	73.3	46.7	53.3	86.7		3.3			10.0		60.0	26.7	6.7	6.7	
Biology	29	4.7	86.2	55.2	44.8	93.1	3.4				3.4		51.7	31.0	6.9	10.3	
Management	29	4.7	79.3	41.4	58.6	86.2	6.9	3.4			3.4		51.7	31.0	3.4	13.8	
Political Sci	26	4.2	92.3	69.2	30.8	88.5		3.8			7.7		46.2	23.1	11.5	15.4	3.8
Spanish	25	4.1	92.0	68.0	32.0	88.0		8.0			4.0		48.0	28.0	8.0	16.0	
Multimedia	23	3.8	73.9	39.1	60.9	82.6	4.3		4.3			8.7	56.5	34.8	4.3	4.3	
Economics	19	3.1	63.2	15.8	84.2	57.9	5.3	10.5	10.5	5.3	5.3	5.3	52.6	26.3	5.3	15.8	
Drama	16	2.6	93.8	81.3	18.8	93.8				6.3			43.8	37.5		18.8	
Atmospheric Sci	14	2.3	85.7	50.0	50.0	78.6	7.1			7.1		7.1	14.3	42.9		42.9	
Accounting	12	2.0	66.7	75.0	25.0	100.0							100.0				
Interdisp Studies	12	2.0	75.0	75.0	25.0	91.7	8.3						58.3	25.0	8.3	8.3	
Music Technology	10	1.6	90.0		100.0	90.0				10.0			30.0	70.0			
Computer Sci	8	1.3	75.0	12.5	87.5	62.5	12.5				12.5	12.5	100.0				
Philosophy	8	1.3	37.5	62.5	37.5	87.5	12.5						75.0	25.0			
Music	7	1.1	100.0	28.6	71.4	85.7		14.3					14.3	42.9	14.3	28.6	
Classics	6	1.0	100.0	33.3	66.7	100.0							33.3	33.3	16.7	16.7	
Liberal Arts (MLA)	6	1.0	0.0	83.3	16.7	83.3						16.7	100.0				
Chemistry	5	0.8	80.0	40.0	60.0	100.0							60.0	40.0			
Physics	5	0.8	60.0	40.0	60.0	100.0							60.0			40.0	
French	4	0.7	100.0	100.0		75.0					25.0		25.0	25.0	25.0	25.0	
Mechatronics	3	0.5	100.0	33.3	66.7	66.7					33.3		100.0				
Women's Studies	3	0.5	100.0	100.0		100.0							33.3	33.3		33.3	
German	2	0.3	50.0	100.0		100.0							100.0				
Indus Engr Mgmt	2	0.3	0.0	50.0	50.0	50.0		50.0					100.0				
UNCA	612	100.0	77.8	59.0	41.0	88.6	2.3	2.6	1.5	0.5	2.1	2.5	51.8	28.3	6.0	13.7	0.2

Double majors and teacher certification students counted in each major but not double counted in total

Table 2
Graduates by Academic Year and Term

	Summer	Fall	Spring	Total
1981-82	27	32	99	158
1982-83	23	36	113	172
1983-84	31	50	122	203
1984-85	38	46	135	219
1985-86	42	43	142	227
1986-87	53	62	151	266
1987-88	50	83	173	306
1988-89	50	83	194	327
1989-90	58	69	191	318
1990-91	36	92	228	356
1991-92	50	94	265	409
1992-93	42	108	292	442
1993-94	53	113	323	489
1994-95	39	129	288	456
1995-96	47	125	298	470
1996-97	47	121	349	517
1997-98	36	120	340	496
1998-99	35	130	311	476
1999-00	32	123	352	507
2000-01	36	123	350	509
2001-02	25	145	338	508
2002-03	34	153	389	576
2003-04	28	155	413	596
2004-05	33	153	391	577
2005-06	32	170	361	563
2006-07	41	160	381	582
2007-08	33	215	467	715
2008-09	26	221	365	612

Figure 1: Degrees Awarded by Academic Year

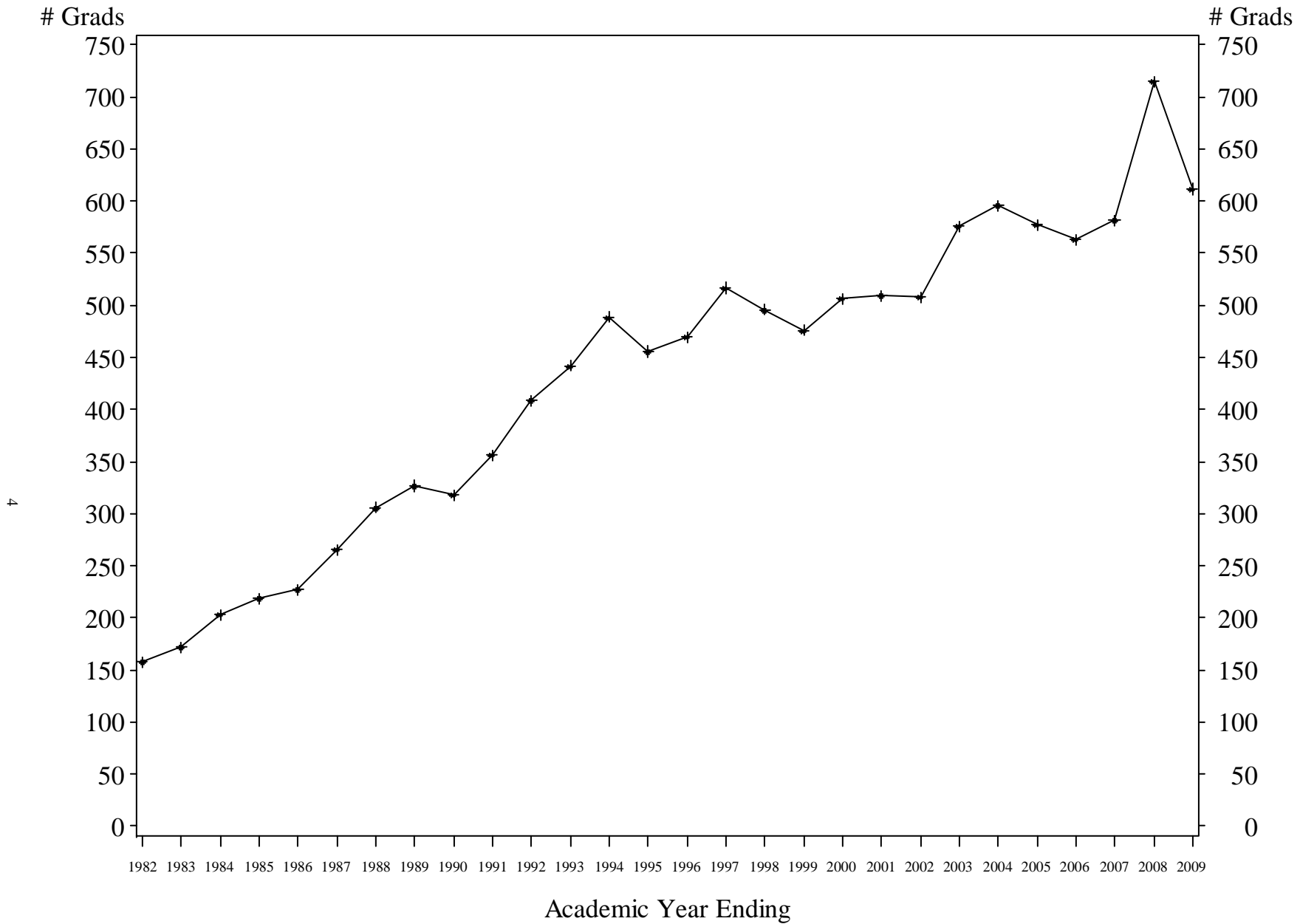


Table 3
UNC Asheville Graduates by Major: Ten Year Trend

	Academic Year										All Years
	1999-00	2000-01	2001-02	2002-03	2003-04	2004-05	2005-06	2006-07	2007-08	2008-09	
Accounting	24	18	19	15	18	13	17	16	11	12	163
Art	21	21	28	22	21	20	44	35	42	35	289
Atmospheric Sci	14	4	13	20	9	18	7	14	22	14	135
Biology	41	32	20	27	23	33	31	31	37	29	304
Chemistry	5	10	10	17	6	5	9	11	14	5	92
Classics	5	5	2	2	5	4	9	2	1	6	41
Computer Sci	9	22	24	33	18	26	11	19	4	8	174
Drama	13	9	12	8	11	14	4	10	14	16	111
Economics	22	14	24	16	18	12	9	15	16	19	165
Education	28	22	20	27	23	27	40	28	35	42	292
Environ Studies	41	40	37	48	51	39	38	25	55	42	416
French	4	3	2	5	5	2	6	6	3	4	40
German	2	4	1	1	3	4	6	4	2	2	29
Health/Wellness Promotion							1	7	29	36	73
History	22	32	23	20	45	28	27	20	39	33	289
Indus Engr Mgmt	5	4	5	1	3	4	3	0	2	2	29
Interdisp Studies			2	17	21	21	22	16	7	12	118
Liberal Arts (MLA)	5	11	7	5	7	1	4	4	11	6	61
Literature	27	38	36	32	27	49	42	52	58	46	407
Mechatronics										3	3
Management	63	63	61	50	56	63	37	58	55	29	535
Mass Comm	22	23	12	25	47	42	32	38	47	37	325
Mathematics	13	11	11	21	9	20	22	24	21	30	182
Multimedia	3	21	11	33	33	26	21	17	34	23	222
Music	9	7	11	3	8	9	6	11	5	7	76
Music Technology		3	2	16	6	10	11	6	9	10	73
Philosophy	7	7	5	10	5	8	10	9	6	8	75
Physics	6	0	6	3	3	4	5	2	8	5	42
Political Sci	18	10	22	26	21	13	19	29	31	26	215
Psychology	76	87	73	85	78	77	87	95	103	87	848
Sociology	38	29	37	32	39	19	30	26	37	43	330
Spanish	9	8	16	12	29	17	16	17	26	25	175
Women's Studies							2	4	2	3	11
UNCA	507	509	508	576	596	577	563	582	715	612	5,745

Double majors and teacher certification students counted in each major but not double counted in total

Table 4
Graduates by Academic Area and Major: Five Year Trend

Academic Area	Major	2004-05		2005-06		2006-07		2007-08		2008-09	
		N	%	N	%	N	%	N	%	N	%
Social Sciences	Accounting	13	2.3	17	3.0	16	2.7	11	1.5	12	2.0
	Economics	12	2.1	9	1.6	15	2.6	16	2.2	19	3.1
	Education	27	4.7	40	7.1	28	4.8	35	4.9	42	6.9
	Health/Wellness Promotion			1	0.2	7	1.2	29	4.1	36	5.9
	Indus Engr Mgmt	4	0.7	3	0.5			2	0.3	2	0.3
	Management	63	10.9	37	6.6	58	10.0	55	7.7	29	4.7
	Mass Comm	42	7.3	32	5.7	38	6.5	47	6.6	37	6.0
	Political Sci	13	2.3	19	3.4	29	5.0	31	4.3	26	4.2
	Psychology	77	13.3	87	15.5	95	16.3	103	14.4	87	14.2
	Sociology	19	3.3	30	5.3	26	4.5	37	5.2	43	7.0
	Total in Area	270	46.8	275	48.8	312	53.6	366	51.2	333	54.4
Natural Sciences	Atmospheric Sci	18	3.1	7	1.2	14	2.4	22	3.1	14	2.3
	Biology	33	5.7	31	5.5	31	5.3	37	5.2	29	4.7
	Chemistry	5	0.9	9	1.6	11	1.9	14	2.0	5	0.8
	Computer Sci	26	4.5	11	2.0	19	3.3	4	0.6	8	1.3
	Environ Studies	39	6.8	38	6.7	25	4.3	55	7.7	42	6.9
	Mathematics	20	3.5	22	3.9	24	4.1	21	2.9	30	4.9
	Mechatronics									3	0.5
	Multimedia	26	4.5	21	3.7	17	2.9	34	4.8	23	3.8
	Physics	4	0.7	5	0.9	2	0.3	8	1.1	5	0.8
		Total in Area	171	29.6	144	25.6	143	24.6	195	27.3	159
Humanities	Art	20	3.5	44	7.8	35	6.0	42	5.9	35	5.7
	Classics	4	0.7	9	1.6	2	0.3	1	0.1	6	1.0
	Drama	14	2.4	4	0.7	10	1.7	14	2.0	16	2.6
	French	2	0.3	6	1.1	6	1.0	3	0.4	4	0.7
	German	4	0.7	6	1.1	4	0.7	2	0.3	2	0.3
	History	28	4.9	27	4.8	20	3.4	39	5.5	33	5.4
	Literature	49	8.5	42	7.5	52	8.9	58	8.1	46	7.5
	Music	9	1.6	6	1.1	11	1.9	5	0.7	7	1.1
	Music Technology	10	1.7	11	2.0	6	1.0	9	1.3	10	1.6
	Philosophy	8	1.4	10	1.8	9	1.5	6	0.8	8	1.3
	Spanish	17	2.9	16	2.8	17	2.9	26	3.6	25	4.1
	Total in Area	165	28.6	181	32.1	172	29.6	205	28.7	192	31.4
Interdisciplinary	Interdisp Studies	21	3.6	22	3.9	16	2.7	7	1.0	12	2.0
	Women's Studies			2	0.4	4	0.7	2	0.3	3	0.5
	Total in Area	21	3.6	24	4.3	20	3.4	9	1.3	15	2.5
Graduate	Liberal Arts (MLA)	1	0.2	4	0.7	4	0.7	11	1.5	6	1.0
UNCA		577	100.0	563	100.0	582	100.0	715	100.0	612	100.0

Figure 2: Baccalaureate Degrees by UNCA Academic Area
 Double majors counted twice. No Teacher Certification Students are included.

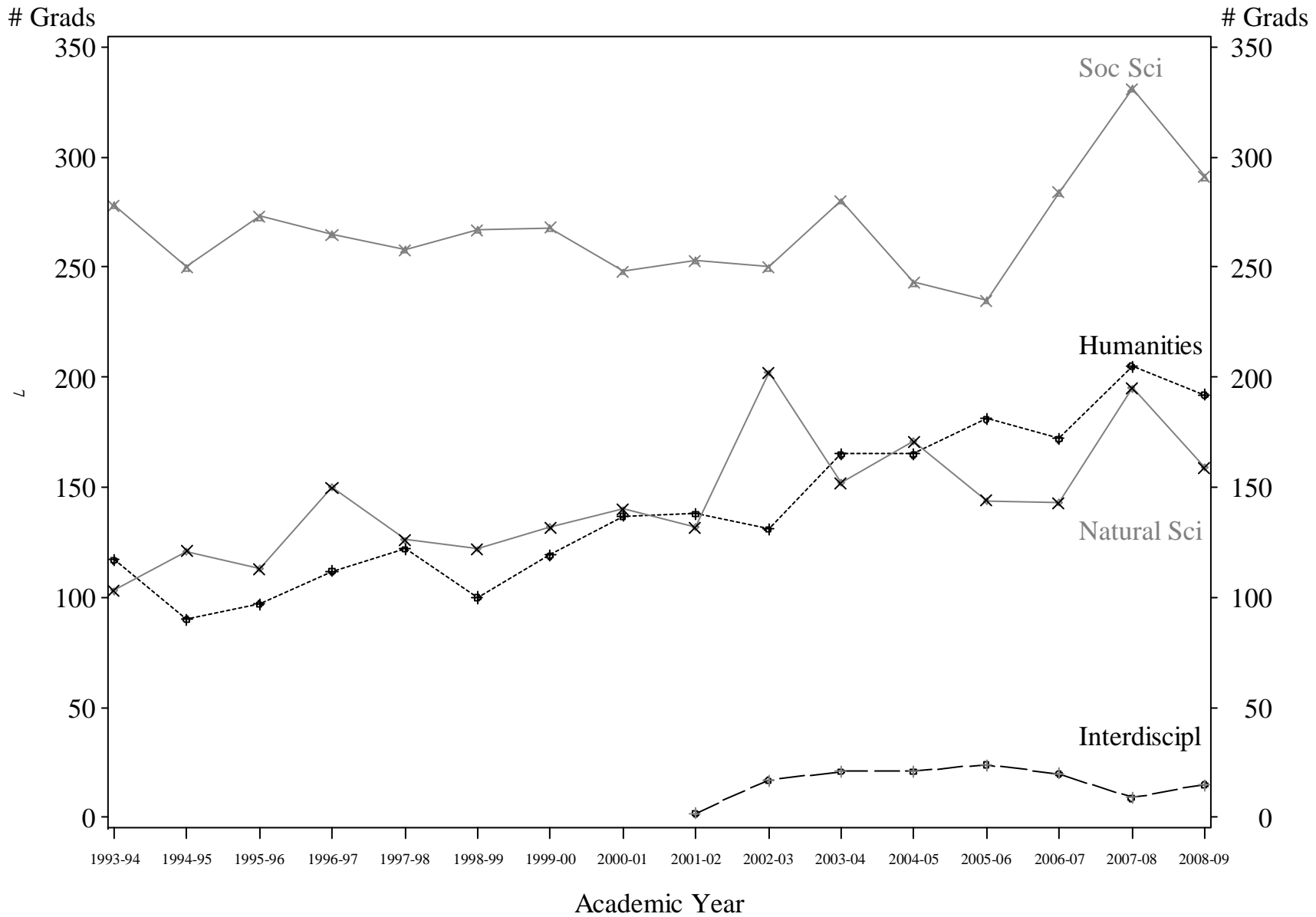


Table 5
Percent of Baccalaureate Degrees in Liberal Arts

Academic Year	Total Degrees Awarded	Liberal Arts Field
		Percent
1993-94	486	70.0
1994-95	451	69.4
1995-96	465	67.5
1996-97	512	70.9
1997-98	492	73.2
1998-99	471	67.9
1999-00	502	67.7
2000-01	498	66.5
2001-02	501	68.7
2002-03	571	70.2
2003-04	589	67.6
2004-05	576	63.7
2005-06	559	71.9
2006-07	578	69.6
2007-08	704	67.2
2008-09	606	69.5
All Years	8,561	68.8

NOTE: Liberal Arts includes all majors except Management, Accounting, Industrial Engineering Management, Computer Sci, Multimedia, Engineering, Mass Communication and Environmental Science.

Table 6
Distribution of Graduates by Race

Academic Year	White		Black		Hispanic		Asian		Am. Indian		Other		Unknown		AY Total	
	N	Pct	N	Pct	N	Pct	N	Pct	N	Pct	N	Pct	N	Pct	N	Pct
1993-94	456	93.3	18	3.7	5	1.0	6	1.2	3	0.6	1	0.2	0	0.0	489	100.0
1994-95	424	93.0	15	3.3	7	1.5	7	1.5	2	0.4	1	0.2	0	0.0	456	100.0
1995-96	434	92.3	22	4.7	4	0.9	10	2.1	0	0.0	0	0.0	0	0.0	470	100.0
1996-97	473	91.5	14	2.7	15	2.9	10	1.9	3	0.6	2	0.4	0	0.0	517	100.0
1997-98	464	93.5	20	4.0	5	1.0	6	1.2	1	0.2	0	0.0	0	0.0	496	100.0
1998-99	436	91.6	20	4.2	8	1.7	8	1.7	2	0.4	2	0.4	0	0.0	476	100.0
1999-00	467	92.1	21	4.1	10	2.0	6	1.2	1	0.2	2	0.4	0	0.0	507	100.0
2000-01	476	93.5	17	3.3	8	1.6	3	0.6	1	0.2	4	0.8	0	0.0	509	100.0
2001-02	463	91.1	18	3.5	13	2.6	6	1.2	1	0.2	2	0.4	5	1.0	508	100.0
2002-03	536	93.1	11	1.9	8	1.4	7	1.2	3	0.5	8	1.4	3	0.5	576	100.0
2003-04	550	92.3	7	1.2	9	1.5	13	2.2	4	0.7	6	1.0	7	1.2	596	100.0
2004-05	532	92.2	13	2.3	12	2.1	5	0.9	3	0.5	8	1.4	4	0.7	577	100.0
2005-06	510	90.6	9	1.6	10	1.8	16	2.8	0	0.0	9	1.6	9	1.6	563	100.0
2006-07	529	90.9	14	2.4	14	2.4	10	1.7	0	0.0	9	1.5	6	1.0	582	100.0
2007-08	664	92.9	24	3.4	6	0.8	8	1.1	2	0.3	6	0.8	5	0.7	715	100.0
2008-09	542	88.6	14	2.3	16	2.6	9	1.5	3	0.5	13	2.1	15	2.5	612	100.0
All Years	7,956	92.0	257	3.0	150	1.7	130	1.5	29	0.3	73	0.8	54	0.6	8,649	100.0

Table 7
Distribution of Baccalaureate Degrees by Gender

Academic Year	Female		Male		AY Total	
	N	Pct	N	Pct	N	Pct
1993-94	274	56.4	212	43.6	486	100.0
1994-95	260	57.6	191	42.4	451	100.0
1995-96	261	56.1	204	43.9	465	100.0
1996-97	279	54.5	233	45.5	512	100.0
1997-98	284	57.7	208	42.3	492	100.0
1998-99	276	58.6	195	41.4	471	100.0
1999-00	326	64.9	176	35.1	502	100.0
2000-01	288	57.8	210	42.2	498	100.0
2001-02	306	61.1	195	38.9	501	100.0
2002-03	315	55.2	256	44.8	571	100.0
2003-04	364	61.8	225	38.2	589	100.0
2004-05	343	59.5	233	40.5	576	100.0
2005-06	356	63.7	203	36.3	559	100.0
2006-07	337	58.3	241	41.7	578	100.0
2007-08	434	61.6	270	38.4	704	100.0
2008-09	356	58.7	250	41.3	606	100.0
All Years	5,059	59.1	3,502	40.9	8,561	100.0

Table 8
Distribution of MLA Graduates by Gender

Academic Year	Female		Male		AY Total	
	N	Percent	N	Percent	N	Percent
1993-94	2	66.7	1	33.3	3	100.0
1994-95	5	100.0	0	0.0	5	100.0
1995-96	2	40.0	3	60.0	5	100.0
1996-97	4	80.0	1	20.0	5	100.0
1997-98	1	25.0	3	75.0	4	100.0
1998-99	5	100.0	0	0.0	5	100.0
1999-00	4	80.0	1	20.0	5	100.0
2000-01	7	63.6	4	36.4	11	100.0
2001-02	4	57.1	3	42.9	7	100.0
2002-03	3	60.0	2	40.0	5	100.0
2003-04	4	57.1	3	42.9	7	100.0
2004-05	1	100.0	0	0.0	1	100.0
2005-06	1	25.0	3	75.0	4	100.0
2006-07	2	50.0	2	50.0	4	100.0
2007-08	8	72.7	3	27.3	11	100.0
2008-09	5	83.3	1	16.7	6	100.0
All Years	63	64.9	34	35.1	97	100.0

Table 9
Graduation Rates for Full-time Freshman Cohorts

Cohort Year	N in Cohort	3 Year Grad Rate	4 Year Grad Rate	5 Year Grad Rate	6 Year Grad Rate
1992	364	0.8	24.7	47.0	51.4
1993	394	0.3	31.7	50.5	55.1
1994	393	0.0	30.3	43.3	48.1
1995	392	0.8	31.4	50.0	53.8
1996	450	0.4	30.9	47.3	50.9
1997	470	0.2	29.1	47.7	51.3
1998	474	0.4	25.5	48.7	51.9
1999	456	0.4	28.1	50.9	53.5
2000	495	0.8	30.9	49.7	53.5
2001	446	0.2	33.2	50.0	53.8
2002	423	0.5	33.1	53.2	59.6
2003	593	0.7	28.7	54.8	58.7
2004	698	0.9	29.8	51.4	
2005	471	0.4	32.7		
2006	569	0.2			

Table 10
Years To Graduate By Admission Type & Academic Year

Academic Year	Admission Type											
	Entered as Freshmen						Entered as Transfer					
	N	% of Grad Class	Years To Graduate				N	% of Grad Class	Years To Graduate			
Min			Mean	Median	Max	Min			Mean	Median	Max	
1994-95	204	45.2	3.0	5.6	4.8	32.0	247	54.8	1.5	4.4	3.5	32.0
1995-96	208	44.7	3.0	5.2	4.5	23.5	257	55.3	1.0	4.3	3.5	36.5
1996-97	259	50.6	3.5	4.8	4.0	24.0	253	49.4	1.0	4.2	3.0	20.5
1997-98	245	49.8	3.0	5.2	4.0	31.0	247	50.2	1.0	4.1	3.0	22.0
1998-99	209	44.4	3.0	4.8	4.0	23.5	262	55.6	1.5	4.2	3.5	22.0
1999-00	251	50.0	3.0	5.0	4.0	28.0	251	50.0	1.5	3.8	3.0	15.0
2000-01	261	52.4	3.0	4.7	4.0	20.5	237	47.6	1.5	4.0	3.0	24.0
2001-02	253	50.5	3.0	5.0	4.5	25.0	248	49.5	1.0	4.2	3.5	17.5
2002-03	294	51.5	3.0	4.8	4.5	22.0	277	48.5	1.5	3.9	3.0	20.0
2003-04	301	51.1	3.0	4.9	4.0	18.5	288	48.9	1.5	3.7	3.0	29.0
2004-05	284	49.3	3.0	4.6	4.0	18.0	292	50.7	1.0	3.6	3.0	20.5
2005-06	264	47.2	3.0	4.8	4.0	28.5	295	52.8	1.5	3.9	3.0	30.0
2006-07	307	53.1	3.0	4.5	4.0	16.5	271	46.9	1.5	3.7	3.0	18.0
2007-08	414	58.8	3.0	4.6	4.5	18.0	290	41.2	1.5	3.5	3.0	29.0
2008-09	363	59.9	3.0	4.7	4.5	23.0	243	40.1	1.5	3.6	3.0	21.0
All Years	4,117	51.0	3.0	4.9	4.0	32.0	3,958	49.0	1.0	3.9	3.0	36.5

Note: second degrees not counted in years to graduate

Table 11
Years To Graduate By Admission Type & Academic Area
2008-09 Graduates

Academic Area	Admission Type											
	Entered as Freshmen						Entered as Transfer					
	N	% of Area	Years To Graduate				N	% of Area	Years To Graduate			
Min			Mean	Median	Max	Min			Mean	Median	Max	
Humanities	99	57.2	3.5	4.6	4.5	10.0	74	42.8	2.0	3.7	3.5	14.5
Interdisciplinary	9	75.0	3.5	4.3	4.0	5.0	3	25.0	3.5	5.8	3.5	10.5
Natural Sciences	95	64.2	3.5	4.7	4.5	23.0	53	35.8	1.5	3.9	3.0	17.0
Social Sciences	160	58.6	3.0	4.7	4.5	22.0	113	41.4	2.0	3.3	3.0	21.0
UNCA Total	363	59.9	3.0	4.7	4.5	23.0	243	40.1	1.5	3.6	3.0	21.0

Note: second degrees not counted in years to graduate

Figure 3: Graduates by Matriculation Student Type

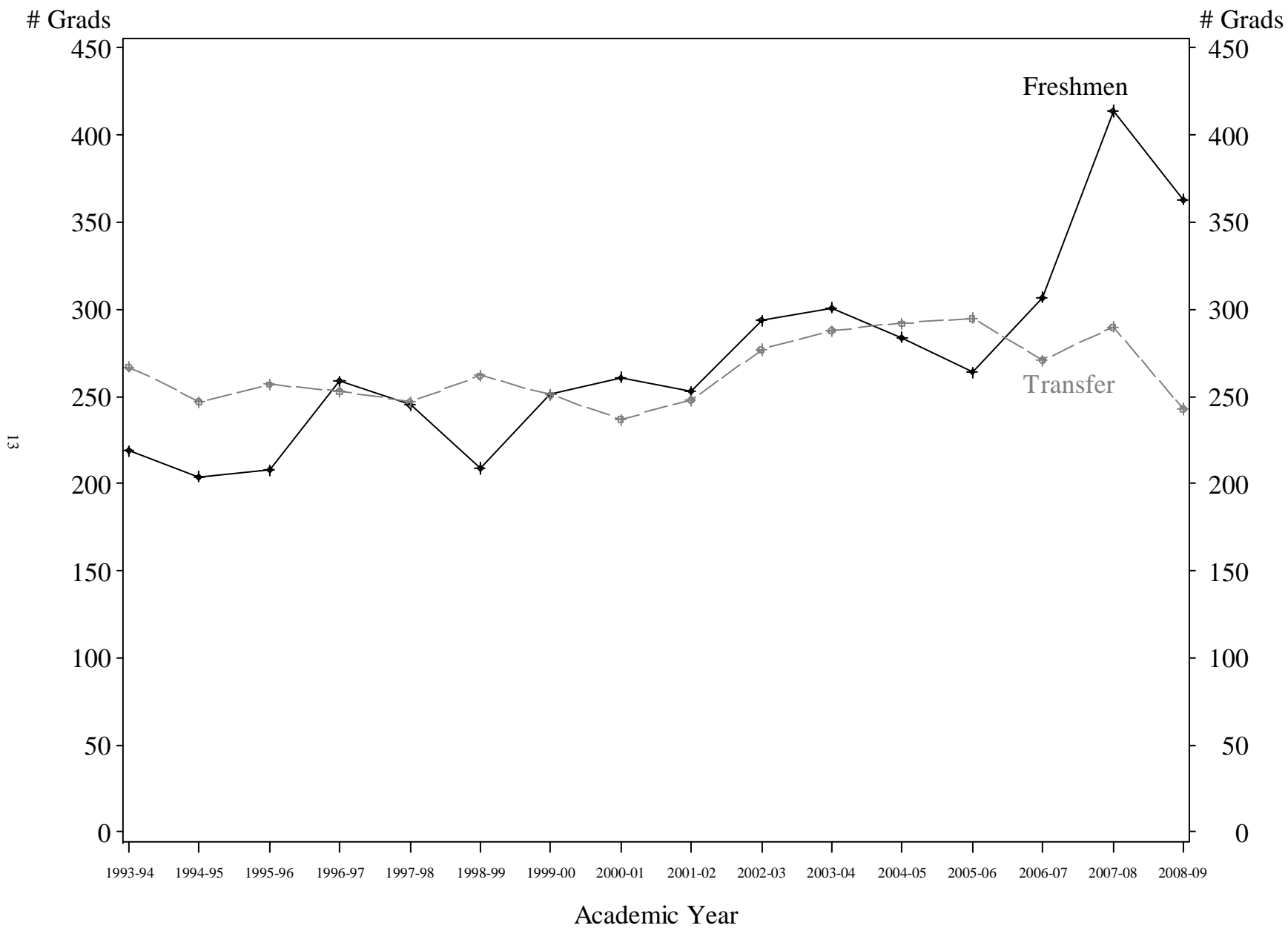


Table 12
Years to Graduate by Major for Graduates Entering as New Freshmen: Five Year Trend

Major	2004-05		2005-06		2006-07		2007-08		2008-09		All years	
	N	Mean	N	Mean	N	Mean	N	Mean	N	Mean	N	Mean
Accounting	6	5.3	5	4.8	6	4.6	6	4.5	2	4.3	25	6.5
Art	7	6.1	19	5.3	17	5.9	18	5.2	18	5.0	79	5.4
Atmospheric Sci	11	4.4	4	4.6	10	4.1	15	4.3	11	4.2	51	4.3
Biology	17	4.3	12	5.5	18	4.5	24	5.4	21	4.8	92	4.9
Chemistry	2	4.5	5	4.1	8	5.3	8	4.6	5	7.9	28	5.3
Classics	1	4.0	6	4.4	1	4.0			6	4.9	14	4.6
Computer Sci	15	5.1	7	5.6	5	4.9	3	4.3	6	4.7	36	5.0
Drama	8	4.0	2	4.0	9	4.2	9	4.2	11	4.3	39	4.2
Economics	7	4.2	2	4.5	10	4.8	7	4.4	13	4.9	39	4.6
Education	13	4.3	24	4.5	22	4.5	28	4.7	34	4.5	121	4.5
Environ Studies	17	4.9	20	4.7	12	4.4	32	4.5	22	4.6	103	4.6
French	2	4.0	3	4.8	3	4.3	1	4.5	2	4.5	11	4.5
German	2	4.8	3	4.2	4	4.3	2	5.0			11	4.5
History	16	4.6	16	4.2	13	5.2	25	4.6	15	4.5	85	4.6
Health/Wellness Promotion					5	4.6	10	4.3	23	4.5	38	4.4
Indus Engr Mgmt	1	4.0	1	5.0			2	4.5	1	22.0	5	8.0
Interdisp Studies	9	4.5	6	5.6	9	4.8	4	5.6	9	4.7	37	4.9
Literature	25	5.0	21	4.7	23	4.2	33	4.6	32	4.4	134	4.6
Mathematics	13	4.4	9	4.4	12	4.3	14	4.4	23	5.4	71	4.7
Mass Comm	20	4.3	11	4.0	21	4.5	35	4.5	17	4.4	104	4.4
Mechatronics									3	5.0	3	5.0
Management	30	4.5	15	4.2	27	4.6	38	4.7	19	4.7	129	4.6
Multimedia	12	4.5	9	4.2	7	4.4	18	4.2	11	4.7	57	4.4
Music	2	4.5	1	4.0	6	5.2	4	4.1	6	4.8	19	4.7
Music Technology	7	4.9	4	4.4	4	4.4	7	4.9	5	4.5	27	4.6
Philosophy	3	8.7	2	4.0	6	3.9	3	3.8	4	5.4	18	5.0
Physics	4	4.3	3	4.7	2	5.0	6	4.8	2	4.5	17	4.6
Political Sci	11	5.0	13	4.7	22	4.4	22	4.5	20	4.3	88	4.5
Psychology	32	4.1	51	4.9	54	4.1	55	4.6	54	4.4	246	4.5
Sociology	9	4.5	17	4.9	15	4.7	24	4.5	25	5.0	90	4.8
Spanish	8	4.1	9	4.3	9	4.0	16	4.7	16	4.2	58	4.3
Women's Studies			2	4.0	3	4.0	2	4.5	2	4.3	9	4.2
UNCA	282	4.6	263	4.8	307	4.5	414	4.6	362	4.7	1,628	4.6

Figure 4: Distribution of Years to Graduate (Elapsed Time)
 2009 Graduates Who Matriculated as New Freshmen

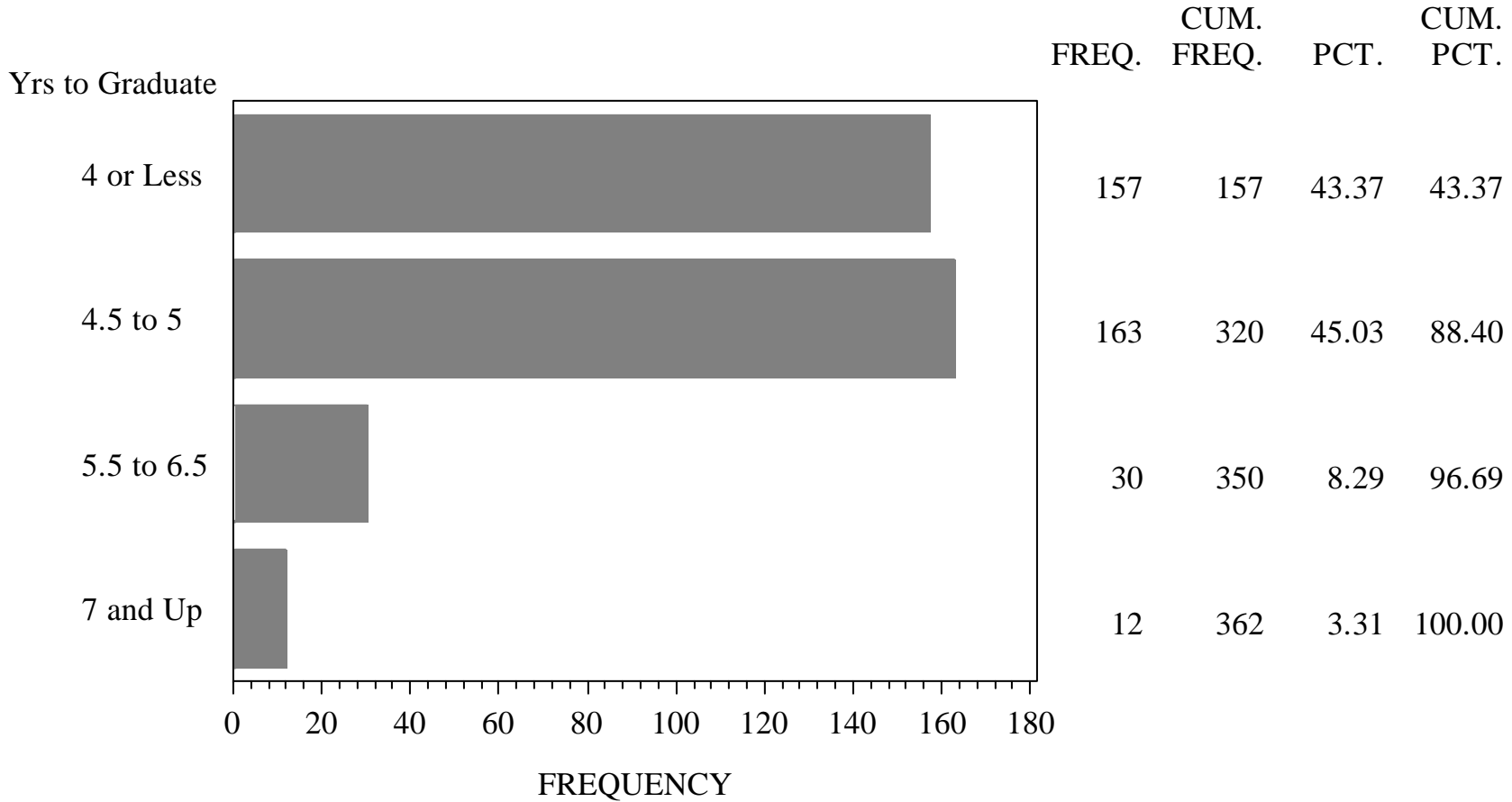


Table 13
Cumulative Hours Earned by Graduates Entering UNC Asheville as New Freshmen

Major	2004-05		2005-06		2006-07		2007-08		2008-09		All years	
	N	Mean	N	Mean	N	Mean	N	Mean	N	Mean	N	Mean
Accounting	6	135.6	5	147.3	6	130.8	6	133.0	2	129.5	25	135.7
Art	7	142.1	19	139.4	17	148.0	18	136.0	18	138.4	79	140.5
Atmospheric Sci	11	131.5	4	133.5	9	132.2	15	131.5	11	130.5	50	131.6
Biology	17	132.7	12	139.8	18	140.1	24	139.2	21	145.3	92	139.7
Chemistry	2	138.0	5	136.0	8	158.1	8	141.9	5	148.8	28	146.4
Classics	1	148.0	6	131.5	1	152.0			6	146.2	14	140.4
Computer Sci	15	135.9	7	129.6	5	126.2	3	128.7	6	130.2	36	131.8
Drama	8	126.4	2	148.5	9	132.9	9	132.4	11	137.6	39	133.6
Economics	7	123.7	2	135.5	10	130.7	7	127.6	13	140.5	39	132.4
Education	13	138.8	24	139.9	22	136.3	28	140.3	34	140.5	121	139.4
Environ Studies	17	134.3	20	133.5	12	137.7	31	135.1	22	138.2	102	135.6
French	2	129.0	3	142.7	3	135.0	1	138.0	2	132.5	11	135.8
German	2	146.0	3	126.3	4	146.6	2	147.5			11	141.1
History	16	133.0	16	134.0	13	129.8	25	131.0	15	132.5	85	132.0
Health/Wellness					5	137.0	10	123.3	23	132.3	38	130.6
Indus Engr Mgmt	1	126.0	1	148.0			2	142.5	1	154.0	5	142.6
Interdisp Studies	9	124.4	6	128.3	9	130.9	4	143.5	9	139.1	37	132.3
Literature	25	129.8	21	131.0	23	133.7	33	129.7	32	129.1	134	130.5
Mathematics	13	132.5	9	135.7	12	136.1	14	131.1	23	143.2	71	136.7
Mass Comm	20	128.9	11	126.4	21	128.7	35	128.8	17	134.0	104	129.4
Mechatronics									3	144.0	3	144.0
Management	30	131.2	15	128.3	26	126.7	37	129.7	19	133.8	127	129.9
Multimedia	12	126.7	9	123.6	7	126.0	18	124.2	11	127.5	57	125.5
Music	2	122.0	1	137.0	6	136.7	4	148.5	6	139.0	19	138.4
Music Technology	7	142.0	4	136.8	4	135.5	7	132.6	5	143.8	27	138.1
Philosophy	3	124.7	2	130.5	6	125.0	3	130.3	4	154.8	18	133.1
Physics	4	126.0	3	138.0	2	175.0	6	148.5	2	153.5	17	145.1
Political Sci	11	127.5	13	133.7	22	134.5	22	130.5	20	134.6	88	132.5
Psychology	32	128.1	51	129.1	54	126.5	55	128.1	54	129.1	246	128.2
Sociology	9	127.0	17	133.2	15	125.7	24	131.5	25	135.2	90	131.4
Spanish	8	131.8	9	136.4	9	134.9	16	134.3	16	131.4	58	133.6
Women's Studies			2	141.5	3	127.0	2	130.5	2	123.5	9	130.2
UNCA	282	129.9	263	131.8	307	131.4	414	130.8	362	133.4	1628	131.5

Students receiving certification in Education are counted in their major field as well as Education.

University Total is unduplicated. Students receiving second degree at UNCA not included.

Figure 5: Distribution of Cumulative Hours Earned (Transfer Students Excluded)

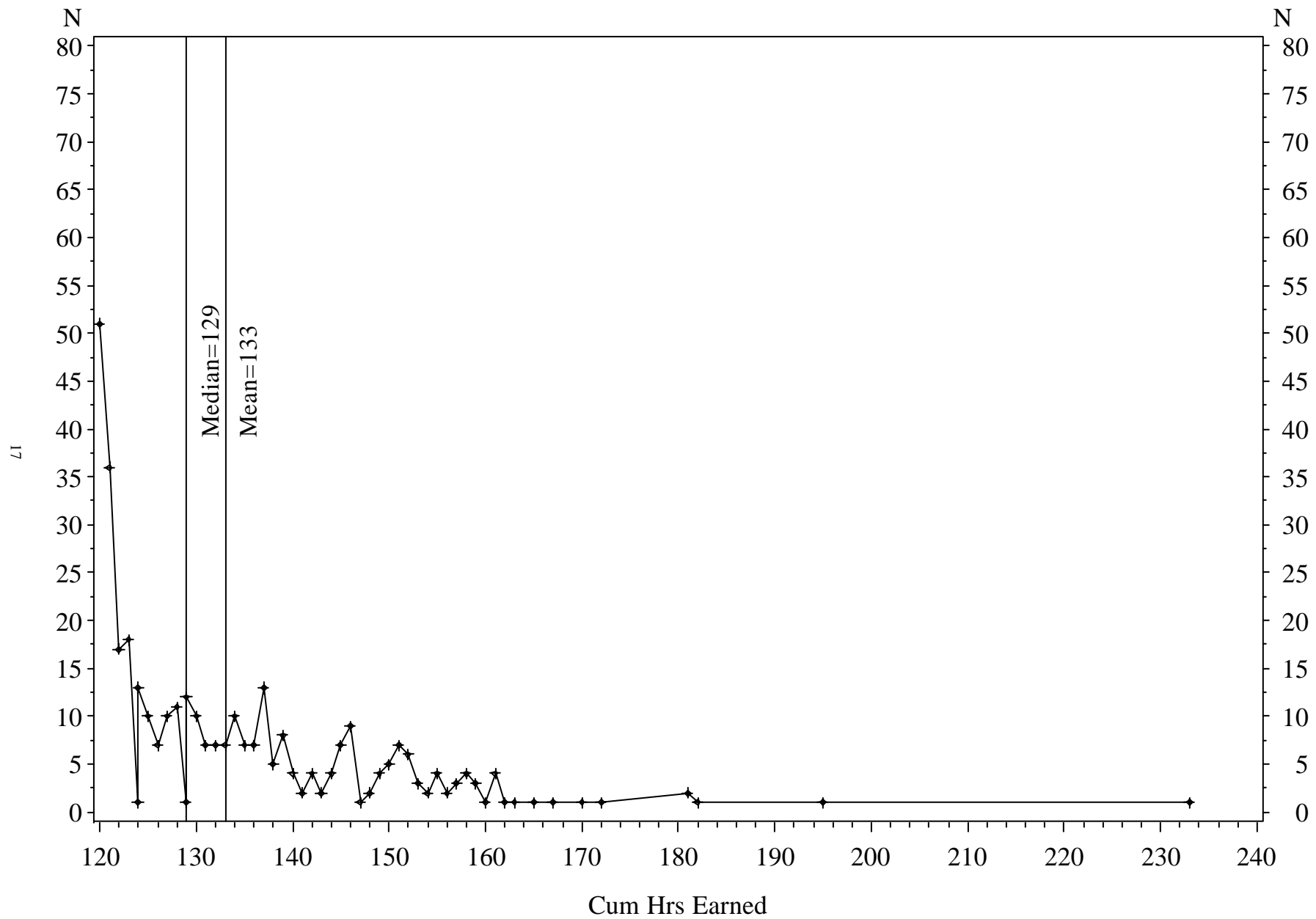


Table 14
Transfer Graduates by Institution Type

Institution Type			2004-05		2005-06		2006-07		2007-08		2008-09	
			N	%	N	%	N	%	N	%	N	%
North Carolina	Public	Senior Institutions	44	15.1	53	18.0	41	15.1	43	14.8	33	14.2
		Community Colleges	129	44.2	116	39.3	135	49.8	135	46.6	115	49.6
		Other					1	0.4				
	Private	Senior Institutions	20	6.8	22	7.5	23	8.5	15	5.2	9	3.9
		Junior Institutions	1	0.3	3	1.0						
		Other	1	0.3	2	0.7	1	0.4	1	0.3		
	Other	Unknown							1	0.3	1	0.4
Total			195	66.8	196	66.4	201	74.2	195	67.2	158	68.1
Out-of-State	Public	Senior Institutions	32	11.0	39	13.2	28	10.3	39	13.4	33	14.2
		Junior Institutions	36	12.3	28	9.5	21	7.7	28	9.7	16	6.9
		Other			2	0.7			1	0.3	2	0.9
	Private	Senior Institutions	20	6.8	23	7.8	14	5.2	20	6.9	14	6.0
		Junior Institutions	2	0.7	2	0.7	3	1.1	1	0.3	1	0.4
		Other	1	0.3	1	0.3			4	1.4	3	1.3
	Other	Foreign Institutions	6	2.1	1	0.3	2	0.7			4	1.7
		Unknown			3	1.0	2	0.7	1	0.3	1	0.4
		Other							1	0.3		
	Total			97	33.2	99	33.6	70	25.8	95	32.8	74
Grand Total All Institutions			292	100.0	295	100.0	271	100.0	290	100.0	232	100.0

Table 15
Students Completing Requirements for Teacher Certification

Academic Year	BA		BFA		BS		Post Bach (UNCA Grad)		Other Post Bach		AY Total	
	N	Percent	N	Percent	N	Percent	N	Percent	N	Percent	N	Percent
1988-89	10	47.6					1	4.8	10	47.6	21	100.0
1989-90	8	27.6					5	17.2	16	55.2	29	100.0
1990-91	16	39.0					5	12.2	20	48.8	41	100.0
1991-92	14	35.9					5	12.8	20	51.3	39	100.0
1992-93	15	46.9			1	3.1	10	31.3	6	18.8	32	100.0
1993-94	22	45.8			1	2.1	9	18.8	16	33.3	48	100.0
1994-95	29	48.3					13	21.7	18	30.0	60	100.0
1995-96	30	46.2	1	1.5	1	1.5	18	27.7	15	23.1	65	100.0
1996-97	21	45.7					13	28.3	12	26.1	46	100.0
1997-98	22	35.5			3	4.8	18	29.0	19	30.6	62	100.0
1998-99	14	31.1					18	40.0	13	28.9	45	100.0
1999-00	28	57.1					6	12.2	15	30.6	49	100.0
2000-01	21	32.8			1	1.6	18	28.1	24	37.5	64	100.0
2001-02	20	36.4					17	30.9	18	32.7	55	100.0
2002-03	27	39.7					11	16.2	30	44.1	68	100.0
2003-04	23	41.1					15	26.8	18	32.1	56	100.0
2004-05	25	41.7			2	3.3	15	25.0	18	30.0	60	100.0
2005-06	37	47.4			3	3.8	19	24.4	19	24.4	78	100.0
2006-07	25	39.7			3	4.8	12	19.0	23	36.5	63	100.0
2007-08	31	53.4	2	3.4	2	3.4	13	22.4	10	17.2	58	100.0
2008-09	35	47.9			7	9.6	13	17.8	18	24.7	73	100.0
All Years	473	42.5	3	0.3	24	2.2	254	22.8	358	32.2	1112	100.0

Table 16
Graduates Completing Teacher Certification Program by Major

Major	2004-05		2005-06		2006-07		2007-08		2008-09		5 Yr Total	
	N	%	N	%	N	%	N	%	N	%	N	%
Psychology	8	29.6	13	32.5	11	37.9	12	34.3	11	25.6	55	31.6
Literature	5	18.5	9	22.5	3	10.3	5	14.3	5	11.6	27	15.5
History	7	25.9	5	12.5	3	10.3	8	22.9	1	2.3	24	13.8
Mathematics	3	11.1	6	15.0	4	13.8	2	5.7	4	9.3	19	10.9
Art	-	-	1	2.5	4	13.8	2	5.7	3	7.0	10	5.7
Biology	2	7.4	2	5.0	2	6.9	2	5.7	2	4.7	10	5.7
Drama	-	-	1	2.5	-	-	-	-	7	16.3	8	4.6
Spanish	-	-	1	2.5	1	3.4	2	5.7	2	4.7	6	3.4
Sociology	-	-	1	2.5	-	-	2	5.7	2	4.7	5	2.9
Environ Studies	-	-	1	2.5	-	-	-	-	2	4.7	3	1.7
Physics	-	-	-	-	-	-	-	-	2	4.7	2	1.1
Accounting	-	-	-	-	1	3.4	-	-	-	-	1	0.6
Chemistry	-	-	-	-	-	-	-	-	1	2.3	1	0.6
Classics	-	-	-	-	-	-	-	-	1	2.3	1	0.6
Mass Comm	1	3.7	-	-	-	-	-	-	-	-	1	0.6
Political Sci	1	3.7	-	-	-	-	-	-	-	-	1	0.6
Interdisp Sp	-	-	-	-	-	-	-	-	-	-	-	-
Atmospheric Sci	-	-	-	-	-	-	-	-	-	-	-	-
Computer Sci	-	-	-	-	-	-	-	-	-	-	-	-
Economics	-	-	-	-	-	-	-	-	-	-	-	-
French	-	-	-	-	-	-	-	-	-	-	-	-
German	-	-	-	-	-	-	-	-	-	-	-	-
Ind Engr Mgmt	-	-	-	-	-	-	-	-	-	-	-	-
Liberal Arts	-	-	-	-	-	-	-	-	-	-	-	-
Management	-	-	-	-	-	-	-	-	-	-	-	-
Multimedia	-	-	-	-	-	-	-	-	-	-	-	-
Music	-	-	-	-	-	-	-	-	-	-	-	-
Music Tech	-	-	-	-	-	-	-	-	-	-	-	-
Philosophy	-	-	-	-	-	-	-	-	-	-	-	-
UNCA Total	27		40		28		35		42		172	

Students with double major counted twice for each major but not in total

Table 17
Percent of Graduates Participating in a Study Abroad Program

Major	2004-05			2005-06			2006-07			2007-08			2008-09			5-Yr Total		
	N SABR		% SABR	N SABR		% SABR	N SABR		% SABR	N SABR		% SABR	N SABR		% SABR	N SABR		% SABR
	N Grads	Grads	Grads	N Grads	Grads	Grads	N Grads	Grads	Grads	N Grads	Grads	Grads	N Grads	Grads	Grads	N Grads	Grads	Grads
Accounting	13	1	7.7	17	0	0.0	16	1	6.3	11	0	0.0	12	0	0.0	69	2	2.9
Art	20	2	10.0	44	9	20.5	35	7	20.0	42	10	23.8	35	6	17.1	176	34	19.3
Atmospheric Sci	18	0	0.0	7	0	0.0	14	1	7.1	22	0	0.0	14	0	0.0	75	1	1.3
Biology	33	4	12.1	31	1	3.2	31	2	6.5	37	3	8.1	29	2	6.9	161	12	7.5
Chemistry	5	0	0.0	9	2	22.2	11	1	9.1	14	2	14.3	5	1	20.0	44	6	13.6
Classics	4	2	50.0	9	0	0.0	2	2	100.0	1	1	100.0	6	3	50.0	22	8	36.4
Computer Sci	26	1	3.8	11	1	9.1	19	0	0.0	4	0	0.0	8	0	0.0	68	2	2.9
Drama	14	1	7.1	4	1	25.0	10	0	0.0	14	1	7.1	16	4	25.0	58	7	12.1
Economics	12	4	33.3	9	1	11.1	15	1	6.7	16	3	18.8	19	2	10.5	71	11	15.5
Education	27	8	29.6	40	7	17.5	28	4	14.3	35	7	20.0	42	9	21.4	172	35	20.3
Environ Studies	39	8	20.5	38	2	5.3	25	3	12.0	55	14	25.5	42	9	21.4	199	36	18.1
French	2	2	100.0	6	3	50.0	6	3	50.0	3	1	33.3	4	3	75.0	21	12	57.1
German	4	3	75.0	6	3	50.0	4	4	100.0	2	2	100.0	2	1	50.0	18	13	72.2
History	28	5	17.9	27	5	18.5	20	5	25.0	39	9	23.1	33	6	18.2	147	30	20.4
Health/Wellness				1	0	0.0	7	1	14.3	29	1	3.4	36	3	8.3	73	5	6.8
Indus Engr Mgmt	4	0	0.0	3	0	0.0				2	0	0.0	2	0	0.0	11	0	0.0
Interdisp Studies	21	5	23.8	22	2	9.1	16	3	18.8	7	6	85.7	12	7	58.3	78	23	29.5
Literature	49	9	18.4	42	11	26.2	52	7	13.5	58	7	12.1	46	5	10.9	247	39	15.8
Mathematics	20	0	0.0	22	1	4.5	24	4	16.7	21	3	14.3	30	6	20.0	117	14	12.0
Mass Comm	42	4	9.5	32	5	15.6	38	8	21.1	47	7	14.9	37	4	10.8	196	28	14.3
Mechatronics													3	0	0.0	3	0	0.0
Management	63	7	11.1	37	3	8.1	58	8	13.8	55	2	3.6	29	3	10.3	242	23	9.5
Multimedia	26	0	0.0	21	5	23.8	17	0	0.0	34	3	8.8	23	2	8.7	121	10	8.3
Music	9	3	33.3	6	1	16.7	11	2	18.2	5	1	20.0	7	0	0.0	38	7	18.4
Music Technology	10	0	0.0	11	0	0.0	6	0	0.0	9	0	0.0	10	0	0.0	46	0	0.0
Philosophy	8	1	12.5	10	0	0.0	9	3	33.3	6	0	0.0	8	1	12.5	41	5	12.2
Physics	4	0	0.0	5	0	0.0	2	0	0.0	8	0	0.0	5	1	20.0	24	1	4.2
Political Sci	13	3	23.1	19	1	5.3	29	10	34.5	31	9	29.0	26	10	38.5	118	33	28.0
Psychology	77	9	11.7	87	8	9.2	95	15	15.8	103	13	12.6	87	14	16.1	449	59	13.1
Sociology	19	4	21.1	30	3	10.0	26	6	23.1	37	7	18.9	43	10	23.3	155	30	19.4
Spanish	17	10	58.8	16	6	37.5	17	12	70.6	26	18	69.2	25	15	60.0	101	61	60.4
Women's Studies				2	0	0.0	4	0	0.0	2	1	50.0	3	0	0.0	11	1	9.1
UNCA	576	76	13.2	559	67	12.0	578	94	16.3	704	108	15.3	606	100	16.5	3023	445	14.7

Students with double major counted twice for each major but not in total

Table 18
Percent of Graduates Participating in Undergraduate Research/Creative Projects
by Type of Participation

	Academic Year Ending	N Graduates	Total Participation %	UGR Event %	UGR Course Workload Defn %	UGR Course Other Defn %	Creative Event %	Creative Course %	Research Distinction %
ACCT	2005	13	30.8	15.4	7.7	23.1	0.0	0.0	15.4
	2006	17	11.8	0.0	0.0	11.8	0.0	0.0	0.0
	2007	16	56.3	12.5	6.3	50.0	0.0	0.0	6.3
	2008	11	45.5	0.0	0.0	45.5	0.0	0.0	0.0
	2009	12	25.0	0.0	8.3	16.7	0.0	0.0	0.0
ART	2005	20	100.0	15.0	15.0	5.0	100.0	40.0	15.0
	2006	44	100.0	29.5	20.5	27.3	77.3	43.2	25.0
	2007	35	100.0	34.3	17.1	22.9	82.9	40.0	5.7
	2008	42	100.0	23.8	14.3	28.6	81.0	35.7	2.4
	2009	35	100.0	42.9	25.7	25.7	77.1	31.4	28.6
ATMS	2005	18	22.2	16.7	16.7	0.0	0.0	0.0	11.1
	2006	7	28.6	28.6	28.6	0.0	0.0	0.0	0.0
	2007	14	28.6	28.6	28.6	0.0	0.0	0.0	14.3
	2008	22	36.4	18.2	36.4	0.0	0.0	0.0	13.6
	2009	14	28.6	21.4	28.6	0.0	0.0	0.0	21.4
BIOL	2005	33	45.5	39.4	36.4	9.1	0.0	0.0	12.1
	2006	31	45.2	25.8	38.7	6.5	0.0	0.0	19.4
	2007	31	54.8	35.5	45.2	6.5	0.0	0.0	19.4
	2008	37	40.5	35.1	32.4	5.4	0.0	0.0	24.3
	2009	29	48.3	37.9	44.8	6.9	0.0	0.0	20.7
CHEM	2005	5	100.0	40.0	100.0	0.0	0.0	0.0	0.0
	2006	9	100.0	66.7	100.0	0.0	0.0	0.0	55.6
	2007	11	100.0	81.8	100.0	18.2	0.0	0.0	45.5
	2008	14	100.0	92.9	100.0	0.0	0.0	0.0	57.1
	2009	5	100.0	100.0	100.0	20.0	0.0	0.0	60.0
CLAS	2005	4	100.0	0.0	0.0	100.0	0.0	0.0	0.0
	2006	9	100.0	55.6	22.2	100.0	0.0	0.0	22.2
	2007	2	100.0	100.0	0.0	100.0	0.0	0.0	50.0
	2008	1	100.0	100.0	0.0	100.0	0.0	0.0	100.0
	2009	6	100.0	33.3	16.7	100.0	0.0	0.0	16.7
CSCI	2005	26	69.2	65.4	3.8	3.8	0.0	0.0	0.0
	2006	11	27.3	18.2	18.2	0.0	0.0	0.0	9.1
	2007	19	15.8	10.5	5.3	0.0	0.0	0.0	0.0
	2008	4	25.0	25.0	0.0	0.0	0.0	0.0	25.0
	2009	8	37.5	37.5	12.5	0.0	0.0	0.0	25.0
DRAM	2005	14	50.0	0.0	50.0	0.0	0.0	0.0	0.0
	2006	4	75.0	25.0	75.0	25.0	0.0	0.0	25.0
	2007	10	100.0	20.0	80.0	20.0	0.0	0.0	0.0
	2008	14	42.9	14.3	28.6	14.3	0.0	7.1	0.0
	2009	16	75.0	25.0	25.0	56.3	0.0	0.0	6.3
ECON	2005	12	100.0	8.3	0.0	100.0	0.0	0.0	0.0
	2006	9	100.0	66.7	22.2	100.0	0.0	0.0	66.7
	2007	15	100.0	26.7	6.7	100.0	0.0	0.0	20.0
	2008	16	100.0	87.5	12.5	100.0	0.0	6.3	12.5
	2009	19	100.0	26.3	10.5	100.0	0.0	0.0	5.3
EDUC	2005	27	100.0	100.0	0.0	100.0	0.0	0.0	0.0
	2006	40	100.0	57.5	2.5	100.0	0.0	0.0	10.0
	2007	28	100.0	21.4	3.6	100.0	0.0	0.0	0.0
	2008	35	100.0	85.7	0.0	100.0	5.7	5.7	2.9
	2009	42	100.0	40.5	16.7	100.0	0.0	0.0	7.1

	Academic Year Ending	N Graduates	Total Participation %	UGR Event %	UGR Course Workload Defn %	UGR Course Other Defn %	Creative Event %	Creative Course %	Research Distinction %
ENVR	2005	39	33.3	28.2	25.6	0.0	0.0	0.0	12.8
	2006	38	28.9	23.7	23.7	2.6	0.0	0.0	21.1
	2007	25	52.0	44.0	48.0	0.0	4.0	0.0	28.0
	2008	55	41.8	36.4	32.7	0.0	1.8	0.0	20.0
	2009	42	40.5	21.4	28.6	11.9	0.0	0.0	9.5
FREN	2005	2	50.0	50.0	0.0	0.0	0.0	0.0	0.0
	2006	6	16.7	0.0	0.0	0.0	0.0	16.7	0.0
	2007	6	66.7	50.0	33.3	0.0	16.7	0.0	16.7
	2008	3	33.3	33.3	33.3	0.0	0.0	0.0	0.0
	2009	4	50.0	25.0	25.0	0.0	0.0	0.0	0.0
GERM	2005	4	50.0	25.0	0.0	25.0	0.0	0.0	0.0
	2006	6	50.0	16.7	33.3	33.3	0.0	0.0	16.7
	2007	4	25.0	25.0	0.0	25.0	0.0	0.0	0.0
	2008	2	0.0	0.0	0.0	0.0	0.0	0.0	0.0
	2009	2	50.0	50.0	0.0	50.0	0.0	0.0	50.0
HIST	2005	28	100.0	39.3	0.0	100.0	0.0	0.0	0.0
	2006	27	100.0	40.7	7.4	100.0	0.0	0.0	11.1
	2007	20	100.0	15.0	5.0	100.0	0.0	0.0	0.0
	2008	39	100.0	35.9	5.1	100.0	0.0	0.0	7.7
	2009	33	100.0	30.3	12.1	100.0	0.0	0.0	12.1
HWP	2006	1	0.0	0.0	0.0	0.0	0.0	0.0	0.0
	2007	7	28.6	0.0	28.6	0.0	0.0	0.0	0.0
	2008	29	20.7	17.2	17.2	0.0	0.0	0.0	10.3
	2009	36	36.1	16.7	27.8	2.8	0.0	2.8	5.6
	IEMT	2005	4	75.0	75.0	25.0	25.0	0.0	0.0
2006		3	66.7	66.7	0.0	0.0	0.0	0.0	66.7
2007									
2008		2	100.0	100.0	0.0	50.0	0.0	0.0	100.0
2009		2	50.0	50.0	0.0	0.0	0.0	0.0	50.0
IST	2005	21	66.7	42.9	38.1	19.0	0.0	0.0	4.8
	2006	22	68.2	31.8	40.9	31.8	0.0	0.0	13.6
	2007	16	93.8	50.0	43.8	50.0	0.0	0.0	6.3
	2008	7	100.0	57.1	57.1	42.9	0.0	0.0	0.0
	2009	12	100.0	50.0	66.7	50.0	0.0	0.0	16.7
LIT	2005	49	100.0	22.4	4.1	100.0	2.0	2.0	2.0
	2006	42	100.0	31.0	0.0	100.0	0.0	2.4	4.8
	2007	52	100.0	15.4	13.5	100.0	0.0	1.9	5.8
	2008	58	100.0	25.9	20.7	100.0	0.0	1.7	3.4
	2009	46	100.0	28.3	15.2	100.0	2.2	2.2	8.7
MATH	2005	20	65.0	65.0	45.0	15.0	0.0	0.0	25.0
	2006	22	59.1	45.5	22.7	40.9	0.0	0.0	22.7
	2007	24	58.3	41.7	33.3	16.7	0.0	0.0	8.3
	2008	21	42.9	42.9	19.0	9.5	0.0	0.0	14.3
	2009	30	63.3	46.7	33.3	20.0	0.0	0.0	10.0
MCOM	2005	42	16.7	2.4	7.1	2.4	0.0	7.1	0.0
	2006	32	21.9	12.5	9.4	0.0	0.0	6.3	0.0
	2007	38	26.3	15.8	7.9	0.0	0.0	10.5	0.0
	2008	47	38.3	23.4	25.5	0.0	2.1	10.6	0.0
	2009	37	51.4	24.3	24.3	5.4	2.7	24.3	0.0

	Academic Year Ending	N Graduates	Total Participation %	UGR Event %	UGR Course Workload Defn %	UGR Course Other Defn %	Creative Event %	Creative Course %	Research Distinction %
MCTR	2009	3	0.0	0.0	0.0	0.0	0.0	0.0	0.0
MGMT	2005	63	100.0	7.9	9.5	100.0	0.0	0.0	6.3
	2006	37	100.0	5.4	8.1	100.0	0.0	0.0	5.4
	2007	58	100.0	1.7	1.7	100.0	0.0	0.0	1.7
	2008	55	100.0	7.3	7.3	100.0	0.0	0.0	5.5
	2009	29	100.0	10.3	10.3	100.0	0.0	0.0	10.3
MMAS	2005	26	100.0	7.7	0.0	3.8	0.0	100.0	0.0
	2006	21	100.0	9.5	14.3	0.0	4.8	95.2	14.3
	2007	17	100.0	0.0	5.9	0.0	0.0	100.0	0.0
	2008	34	100.0	0.0	2.9	0.0	2.9	100.0	0.0
	2009	23	100.0	17.4	8.7	0.0	4.3	100.0	8.7
MUSC	2005	9	11.1	11.1	11.1	0.0	0.0	0.0	0.0
	2006	6	33.3	33.3	33.3	0.0	0.0	0.0	16.7
	2007	11	27.3	9.1	27.3	0.0	0.0	0.0	9.1
	2008	5	40.0	40.0	40.0	0.0	0.0	0.0	0.0
	2009	7	28.6	28.6	14.3	0.0	0.0	0.0	0.0
MUST	2005	10	50.0	10.0	50.0	0.0	0.0	0.0	10.0
	2006	11	72.7	0.0	72.7	0.0	0.0	0.0	0.0
	2007	6	33.3	0.0	33.3	0.0	0.0	0.0	0.0
	2008	9	55.6	0.0	55.6	0.0	0.0	0.0	0.0
	2009	10	50.0	0.0	40.0	10.0	0.0	0.0	0.0
PHIL	2005	8	100.0	50.0	50.0	100.0	0.0	0.0	25.0
	2006	10	100.0	40.0	90.0	100.0	0.0	0.0	30.0
	2007	9	100.0	33.3	66.7	100.0	0.0	0.0	0.0
	2008	6	100.0	83.3	100.0	100.0	0.0	0.0	16.7
	2009	8	100.0	37.5	100.0	75.0	0.0	0.0	25.0
PHYS	2005	4	50.0	50.0	50.0	0.0	0.0	0.0	25.0
	2006	5	60.0	60.0	20.0	0.0	0.0	0.0	60.0
	2007	2	100.0	100.0	50.0	0.0	0.0	0.0	100.0
	2008	8	37.5	25.0	25.0	12.5	0.0	0.0	0.0
	2009	5	80.0	20.0	60.0	40.0	0.0	0.0	0.0
POLS	2005	13	69.2	53.8	15.4	23.1	0.0	0.0	0.0
	2006	19	42.1	26.3	10.5	26.3	0.0	0.0	10.5
	2007	29	58.6	34.5	13.8	34.5	0.0	0.0	6.9
	2008	31	64.5	25.8	12.9	48.4	0.0	0.0	3.2
	2009	26	50.0	42.3	11.5	15.4	0.0	0.0	0.0
PSYC	2005	77	44.2	24.7	19.5	18.2	0.0	1.3	0.0
	2006	87	46.0	19.5	25.3	21.8	1.1	1.1	4.6
	2007	95	35.8	15.8	17.9	17.9	1.1	0.0	5.3
	2008	103	44.7	35.9	16.5	18.4	1.0	0.0	3.9
	2009	87	50.6	28.7	33.3	12.6	1.1	0.0	9.2
SOC	2005	19	15.8	10.5	0.0	15.8	0.0	0.0	0.0
	2006	30	23.3	23.3	6.7	6.7	0.0	0.0	10.0
	2007	26	30.8	7.7	23.1	3.8	0.0	0.0	3.8
	2008	37	29.7	16.2	13.5	10.8	0.0	0.0	5.4
	2009	43	30.2	18.6	14.0	7.0	0.0	0.0	4.7

	Academic Year Ending	N Graduates	Total Participation %	UGR Event %	UGR Course Workload Defn %	UGR Course Other Defn %	Creative Event %	Creative Course %	Research Distinction %
SPAN	2005	17	47.1	35.3	23.5	17.6	0.0	0.0	5.9
	2006	16	31.3	25.0	18.8	12.5	0.0	0.0	18.8
	2007	17	47.1	17.6	29.4	23.5	0.0	0.0	0.0
	2008	26	34.6	26.9	23.1	15.4	0.0	0.0	7.7
	2009	25	40.0	20.0	28.0	20.0	0.0	0.0	12.0
WMST	2006	2	100.0	100.0	50.0	50.0	0.0	0.0	100.0
	2007	4	0.0	0.0	0.0	0.0	0.0	0.0	0.0
	2008	2	50.0	50.0	0.0	50.0	0.0	0.0	0.0
	2009	3	33.3	0.0	33.3	0.0	0.0	0.0	0.0
UNCA	2005	576	62.3	24.7	16.8	34.2	3.5	6.1	5.4
	2006	559	60.6	23.8	20.9	34.2	6.1	7.3	12.5
	2007	578	62.1	19.7	20.2	35.8	5.0	6.1	6.7
	2008	704	62.5	28.0	20.7	33.5	4.8	7.8	8.5
	2009	606	61.6	25.7	24.1	31.2	4.5	7.1	9.4

Table 19
Percent of Graduates Participating in Service Learning

Major	2004-05			2005-06			2006-07			2007-08			2008-09			5-Yr Total		
	N Grads	N SL Grads	% SL Grads	N Grads	N SL Grads	% SL Grads	N Grads	N SL Grads	% SL Grads	N Grads	N SL Grads	% SL Grads	N Grads	N SL Grads	% SL Grads	N Grads	N SL Grads	% SL Grads
Accounting	13	9	69.2	17	9	52.9	16	7	43.8	11	5	45.5	12	4	33.3	69	34	49.3
Art	20	10	50.0	44	21	47.7	35	17	48.6	42	16	38.1	35	12	34.3	176	76	43.2
Atmospheric Sci	18	10	55.6	7	5	71.4	14	8	57.1	22	11	50.0	14	10	71.4	75	44	58.7
Biology	33	17	51.5	31	17	54.8	31	17	54.8	37	20	54.1	29	19	65.5	161	90	55.9
Chemistry	5	4	80.0	9	4	44.4	11	6	54.5	14	7	50.0	5	3	60.0	44	24	54.5
Classics	4	3	75.0	9	6	66.7	2	1	50.0	1	1	100.0	6	5	83.3	22	16	72.7
Computer Sci	26	20	76.9	11	9	81.8	19	14	73.7	4	3	75.0	8	7	87.5	68	53	77.9
Drama	14	9	64.3	4	2	50.0	10	6	60.0	14	5	35.7	16	13	81.3	58	35	60.3
Economics	12	9	75.0	9	5	55.6	15	11	73.3	16	10	62.5	19	8	42.1	71	43	60.6
Education	27	18	66.7	40	35	87.5	28	23	82.1	35	26	74.3	42	35	83.3	172	137	79.7
Environ Studies	39	31	79.5	38	31	81.6	25	21	84.0	55	36	65.5	42	20	47.6	199	139	69.8
French	2	2	100.0	6	5	83.3	6	4	66.7	3	1	33.3	4	1	25.0	21	13	61.9
German	4	2	50.0	6	4	66.7	4	3	75.0	2	2	100.0	2	0	0.0	18	11	61.1
History	28	16	57.1	27	17	63.0	20	14	70.0	39	21	53.8	33	17	51.5	147	85	57.8
Health/Wellness				1	1	100.0	7	7	100.0	29	29	100.0	36	36	100.0	73	73	100.0
Indus Engr Mgmt	4	2	50.0	3	2	66.7				2	1	50.0	2	1	50.0	11	6	54.5
Interdisp Studies	21	17	81.0	22	11	50.0	16	9	56.3	7	6	85.7	12	4	33.3	78	47	60.3
Literature	49	32	65.3	42	30	71.4	52	27	51.9	58	35	60.3	46	27	58.7	247	151	61.1
Mathematics	20	9	45.0	22	14	63.6	24	14	58.3	21	12	57.1	30	15	50.0	117	64	54.7
Mass Comm	42	40	95.2	32	23	71.9	38	18	47.4	47	21	44.7	37	7	18.9	196	109	55.6
Mechatronics													3	2	66.7	3	2	66.7
Management	63	60	95.2	37	36	97.3	58	47	81.0	55	51	92.7	29	14	48.3	242	208	86.0
Multimedia	26	18	69.2	21	17	81.0	17	8	47.1	34	15	44.1	23	9	39.1	121	67	55.4
Music	9	4	44.4	6	4	66.7	11	8	72.7	5	4	80.0	7	1	14.3	38	21	55.3
Music Technology	10	7	70.0	11	6	54.5	6	2	33.3	9	5	55.6	10	1	10.0	46	21	45.7
Philosophy	8	2	25.0	10	5	50.0	9	4	44.4	6	5	83.3	8	3	37.5	41	19	46.3
Physics	4	2	50.0	5	4	80.0	2	2	100.0	8	5	62.5	5	2	40.0	24	15	62.5
Political Sci	13	10	76.9	19	14	73.7	29	17	58.6	31	20	64.5	26	13	50.0	118	74	62.7
Psychology	77	59	76.6	87	70	80.5	95	65	68.4	103	61	59.2	87	54	62.1	449	309	68.8
Sociology	19	16	84.2	30	19	63.3	26	20	76.9	37	22	59.5	43	24	55.8	155	101	65.2
Spanish	17	15	88.2	16	13	81.3	17	15	88.2	26	16	61.5	25	17	68.0	101	76	75.2
Women's Studies				2	2	100.0	4	1	25.0	2	0	0.0	3	2	66.7	11	5	45.5
UNCA	576	415	72.0	559	385	68.9	578	361	62.5	704	424	60.2	606	321	53.0	3023	1906	63.0

Students with double major counted twice for each major but not in total